



5 Wellington Road East Lindfield NSW

5 5 2

A masterpiece of contemporary luxury, this new master-built residence sets a new benchmark for prestige living in East Lindfield. Bathed in natural light from a prized north-west aspect and positioned with level entry leading to a level backyard, the home unfolds across a sophisticated two-level layout where soaring double-height voids and statement designer chandeliers create an immediate sense of grandeur. At its heart, a spectacular living area is anchored by a custom marble feature wall, while the showpiece kitchen with waterfall island and butler's pantry flows effortlessly to a covered alfresco terrace overlooking a sparkling pool and manicured gardens. With five opulent bedrooms each featuring full ensuites with heated flooring, an upstairs sitting area with sleek bar, and exquisite finishes throughout, this is resort-style family living

Type : House

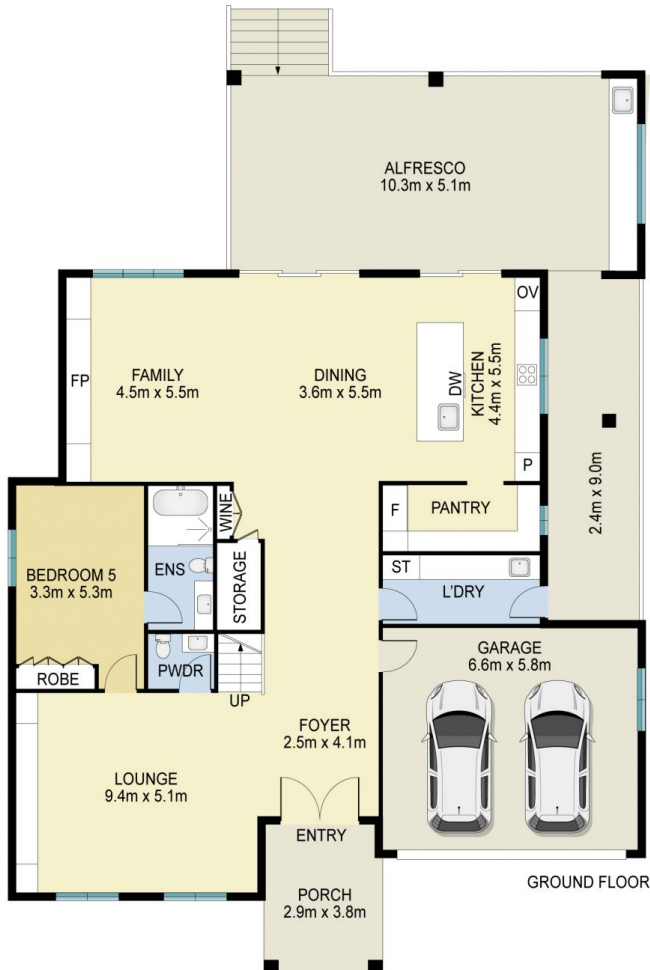
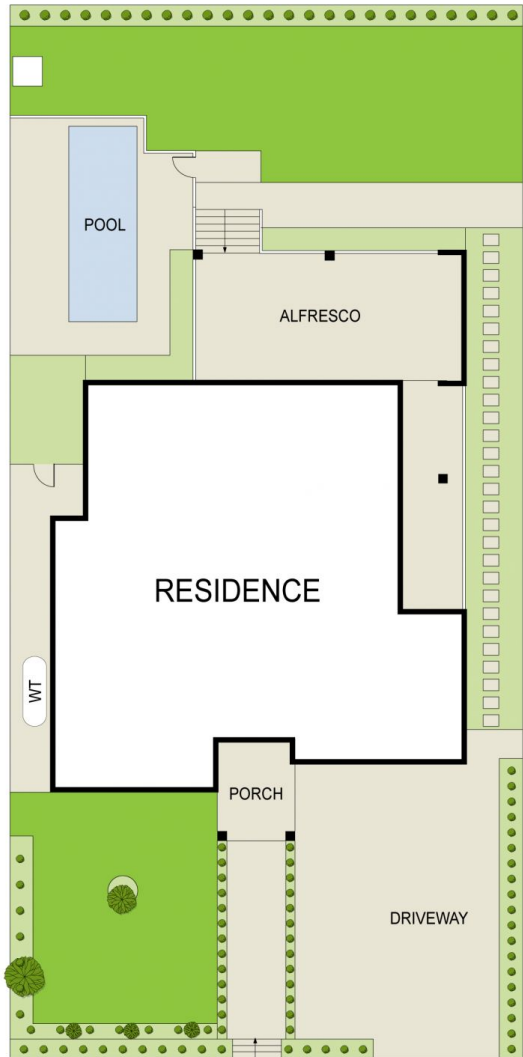
Price : Auction (unless sold prior)

View : <https://www.assetrealty.com.au/sale/nsw/north-s-hore-upper/east-lindfield/residential/house/8612776>



Anna Chow
02 9498 7799

[For full version visit the website](https://www.assetrealty.com.au)



5 Wellington Rd, East Lindfield NSW 2070

INTERNAL SIZE: 409m²
EXTERNAL SIZE: 38.3m²



ASSET
reality

DISCLAIMER: 3D Property View accepts no liability for the accuracy of details contained within our floor plans. All plans are drawn and also checked to the best our ability, however information contained in our floor plans such as are calculations are approximate, and have not been surveyed or drawn to scale. Our floor plans are for representational purposes only and should be used as such. Do not attempt to refer to our floor plans for structural or detailed information.