



116A Booralie Road Duffys Forest NSW

9 🏠 9 🏡 20 🚗

This spectacular estate offers a masterclass in precision design and contemporary luxury, elevating its stunning natural surroundings to create a true resort-style living experience. Spanning 5.2 acres, the property provides the ultimate in privacy and convenience. A remarkable feature is its 163m frontage directly onto the prestigious Terrey Hills Golf and Country Club, offering unparalleled views and access to one of Sydney's top private courses.

Type : House

Price : For Sale - Contact Agent

View : <https://www.assetrealty.com.au/sale/nsw/northern-beaches/duffys-forest/residential/house/8489594>

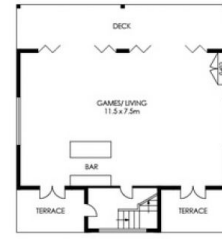
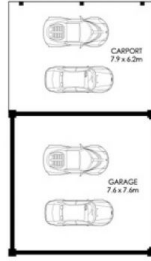
A Home of Unrivalled Elegance

The grand entrance, secured by a gate, leads you past horse paddocks to the striking main residence. Inside, polished concrete flooring, marble fixtures, and floor-to-ceiling glass create a continuous flow between living spaces. The home is designed for both sophisticated



Ari Akbarian
02 9498 7799

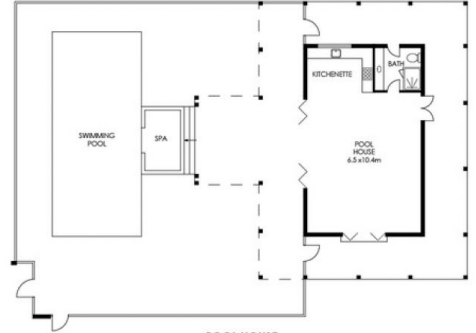
[For full version visit the website](https://www.assetrealty.com.au)



GROUND LEVEL

GUEST HOUSE

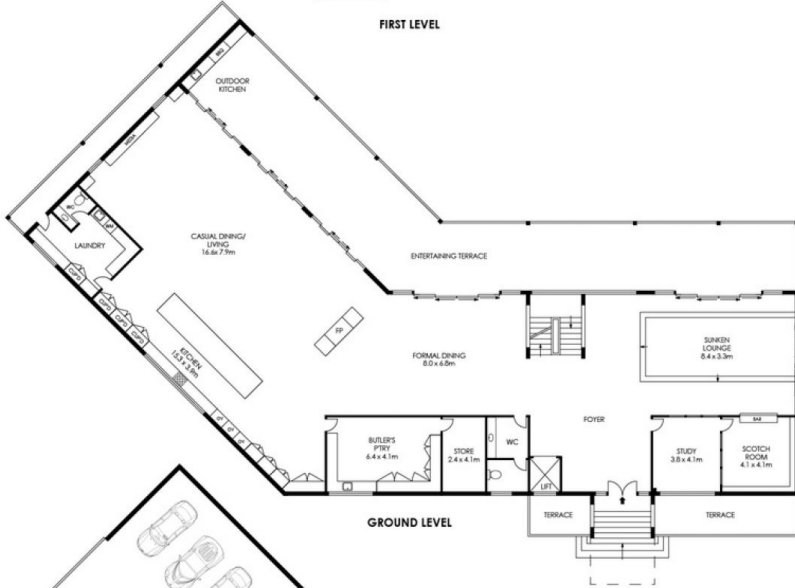
FIRST LEVEL



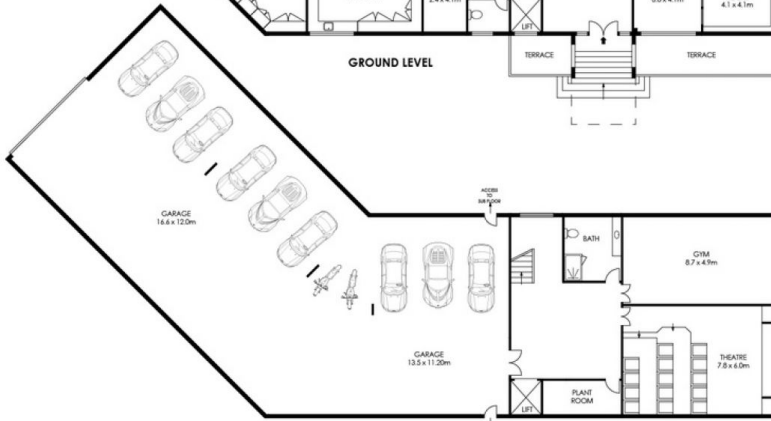
POOL HOUSE GROUND LEVEL



FIRST LEVEL



GROUND LEVEL



BASEMENT LEVEL



SITE PLAN (NOT TO SCALE)

APPROX. INTERNAL AREA	=	1745 m ²
APPROX. EXTERNAL AREA	=	325 m ²
TOTAL	=	2070 m ²
GUEST HOUSE	=	191 m ²
POOL HOUSE	=	67 m ²
LAND SIZE	=	18956 m ²

PLANS SHOWN ONLY INDICATIVE OF LAYOUT. DIMENSIONS ARE APPROXIMATE.



116A Booralie Road, Duffys Forest