



137 Springdale Road East Killara NSW

5 5 2

ANOTHER SOLD BY ANNA CHOW AT STREET RECORD!

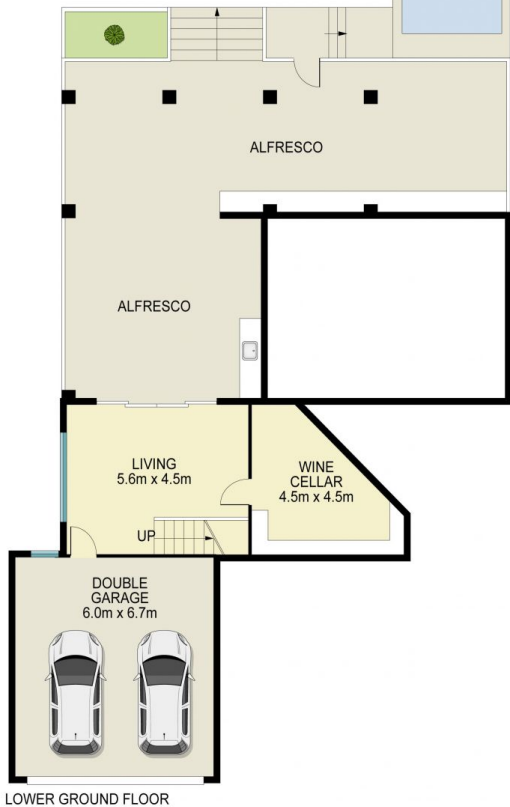
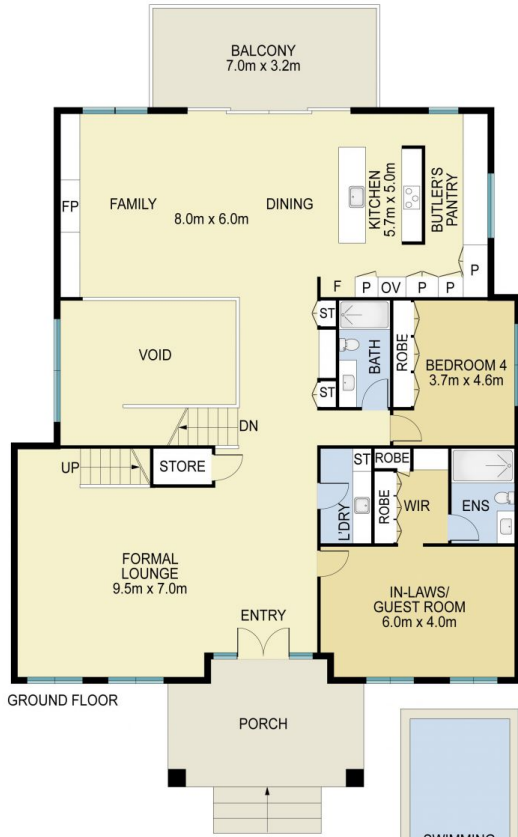
A masterpiece of contemporary grandeur, this newly built residence with land size over 1,000 sqm sets a new benchmark for luxury in East Killara's most prestigious street. Bathed in natural light, its striking façade gives way to breathtaking interiors where a sleek monochromatic palette is enriched by the warmth of natural materials. A sanctuary of resort-style indulgence, soaring 6m chandelier-adorned ceilings frame paneled glass walls, unveiling leafy views to Chatswood's skyline. At its heart, a spectacular living area is anchored by a custom Italian marble feature wall, while the opulent upper-level bedrooms each boast private ensuites and underfloor

Type : House
Land Size : 1012 sqm
View : <https://www.assetrealty.com.au/sale/nsw/north-shore-upper/east-killara/residential/house/8256097>



Anna Chow
02 9498 7799

[For full version visit the website](https://www.assetrealty.com.au)



137 Springdale Rd, East Killara NSW 2071

INTERNAL SIZE: 517m²
EXTERNAL SIZE: 211m²



ASSET
reality

DISCLAIMER: 3D Property View accepts no liability for the accuracy of details contained within our floor plans. All plans are drawn and also checked to the best of our ability, however information contained in our floor plans such as area calculations are approximate, and have not been surveyed or drawn to scale. Our floor plans are for representational purposes only and should be used as such. Do not attempt to refer to our floor plans for structural or detailed information.