



26 Bungalow Avenue Pymble NSW

4 2 1

Charming Character Home in Prime Pymble Location

A spacious family home with high ceilings and period features that sets this home apart from the others. Set in an ideal location within walking distance from Pymble train station, this home offers:

- \* Delightful period charm with the convenience of single-level living
- \* Spacious formal living room with a cozy fireplace, complemented by a large, flat backyard
- \* Modern kitchen featuring quality appliances, including a dishwasher
- \* Stylishly renovated bathroom and ensuite, plus an internal laundry

**Type** : House

**View** : <https://www.assetrealty.com.au/lease/nsw/north-s-hore-upper/pymble/residential/house/8253148>

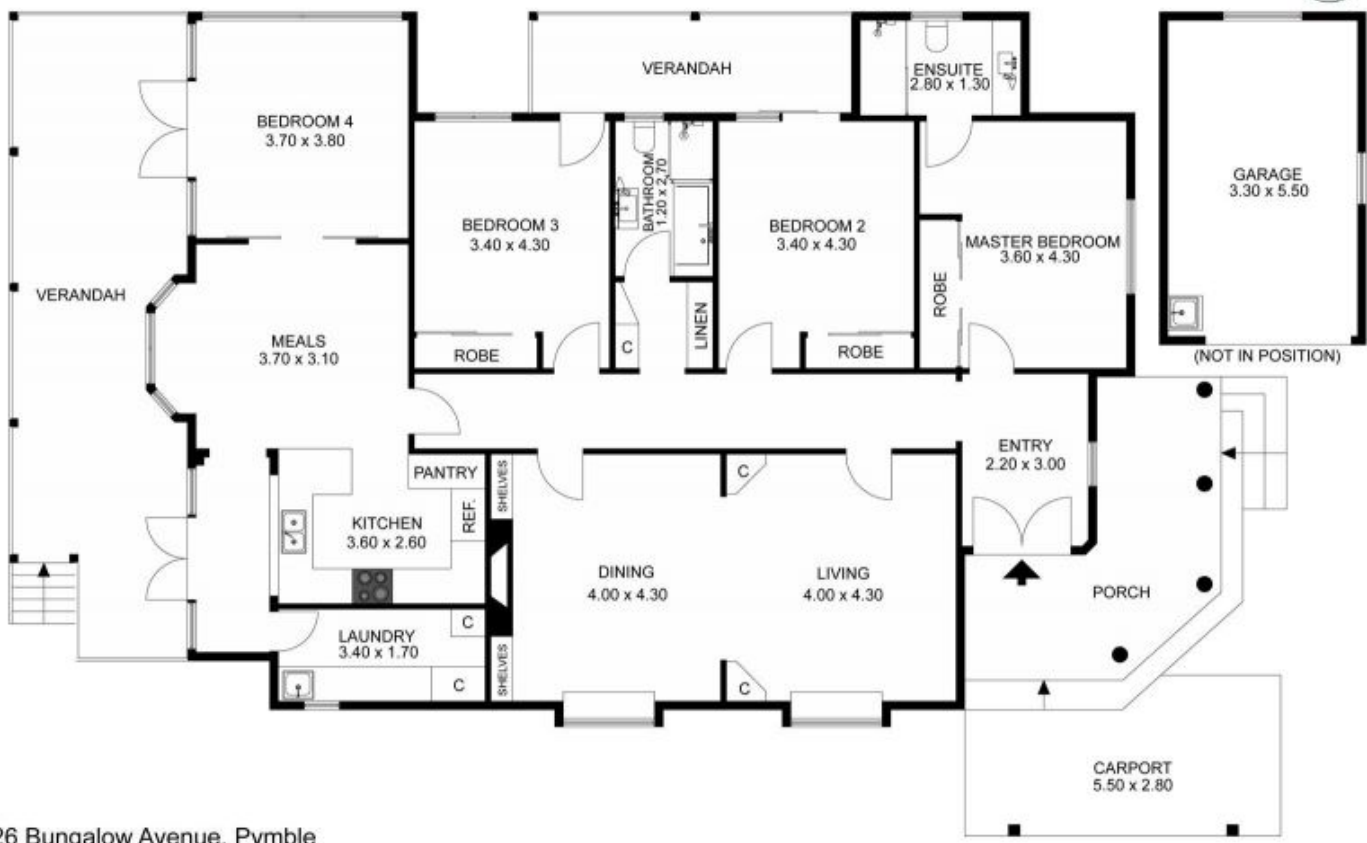


**Raymond Chen**  
02 9498 7799



**Christine Sheridan**  
02 9498 7799

[For full version visit the website](#)



26 Bungalow Avenue, Pymble

The floor plan is not to scale, measurements are indicative and in metres. Exterior elements are not in position. Plans should not be relied on. Interested parties should make and rely on their own enquiries.