



11/213 Mona Vale Road St Ives NSW

3 2 1

Brand New Apartment & Home Office!

This new three-bedroom residential apartment is located in the heart of the village, embracing industrial chic edgy elements such as metal and natural tones and textures boasting aesthetic trends all in a loft-style living.

Features:

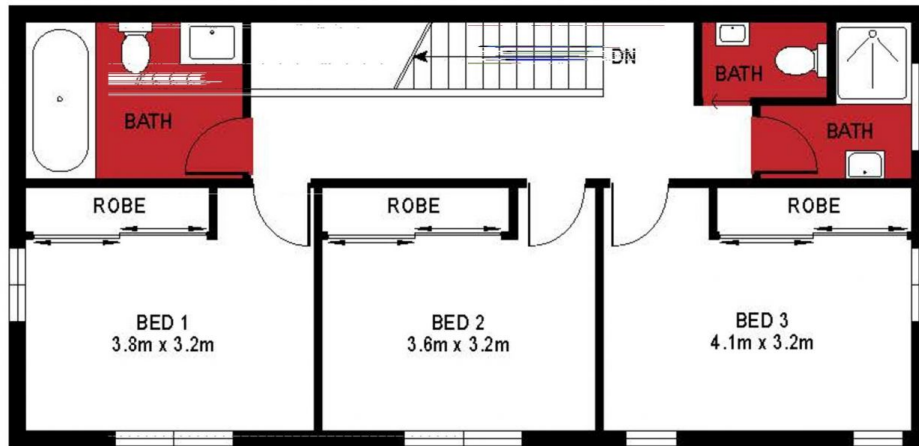
- Modern layouts
- European appliances
- Polished Concrete
- High ceilings
- Expansive and airy
- Double-glazing windows
- 25KW Solar System
- Individual air conditioning units in each room.
- Bust stop nearby

Price : DEPOSIT TAKEN \$950.00 pw

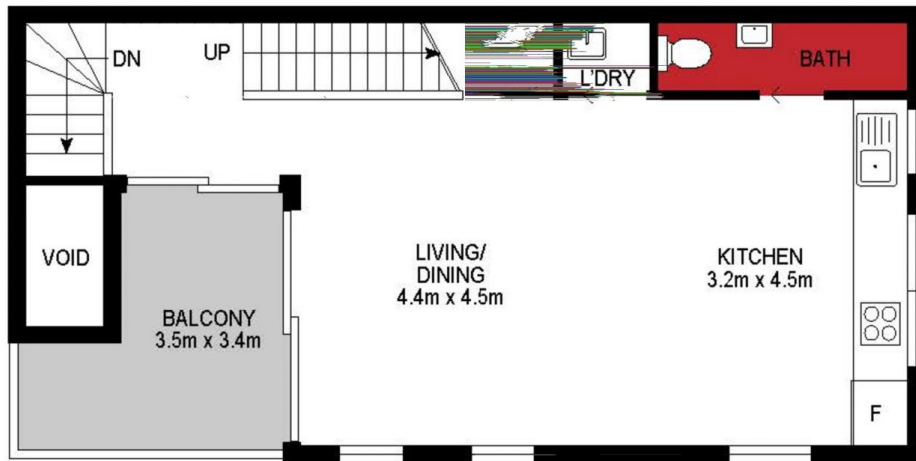
View : <https://www.assetrealty.com.au/lease/nsw/north-shore-upper/st-ives/residential/apartment/7966038>



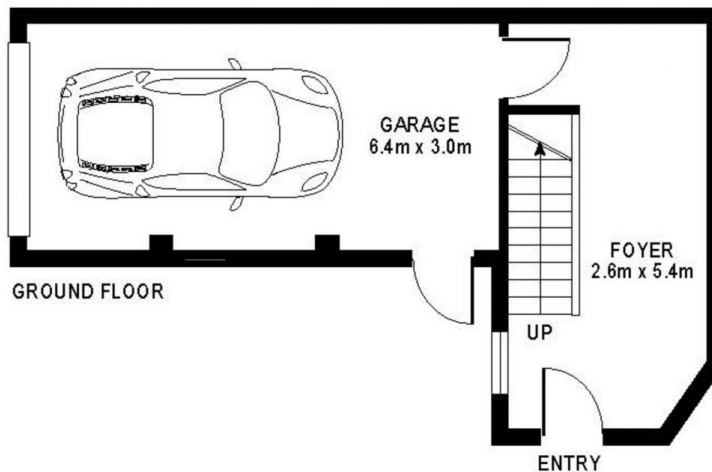
Margaret Matthews
02 9498 7799



2ND FLOOR



1ST FLOOR



GROUND FLOOR

11/213 Mona Vale Road, St Ives

INTERNAL SIZE: 133.2m²
EXTERNAL SIZE: 19.2m²



DISCLAIMER: 3D Property View is a computer-generated representation of details contained within our floor plans. All plans are drawn and also checked to the accuracy of the information contained in our floor plans such as are calculations are approximate, and have not been independently verified. Our floor plans are for representational purposes only and should be used as such. Do not attempt to use floor plans for structural or detailed information.