



1401/169 Mona Vale Road St Ives NSW

2 2 1

With a level walk of 250 metres to St Ives Shopping Village and 5 metres to the Bus network servicing both Macquarie Park and Gordon Train station, this sun-drenched unit with high ceilings is the ultimate location for downsizers, young families and singles.

The unit is one of four penthouses in the exclusive "Willow Apartments" with security video intercom entry access from both the Car Park and Street entrance. Upon entry you will notice the high ceilings, Oak floors, large living area, internal dining, open plan living and that beautiful terrace with tumbled travertine tiling, capturing Pymble golf course and district views.

Adjacent to the living area is the Kitchen fitted with Gas cooktop, Caesarstone benchtops, Miele appliances and provides plenty of storage. Both bedrooms are located on the rear corner of the unit with the Master bedroom boasting a modern ensuite and walk-in robe. Furthermore

Price : \$ 905,000

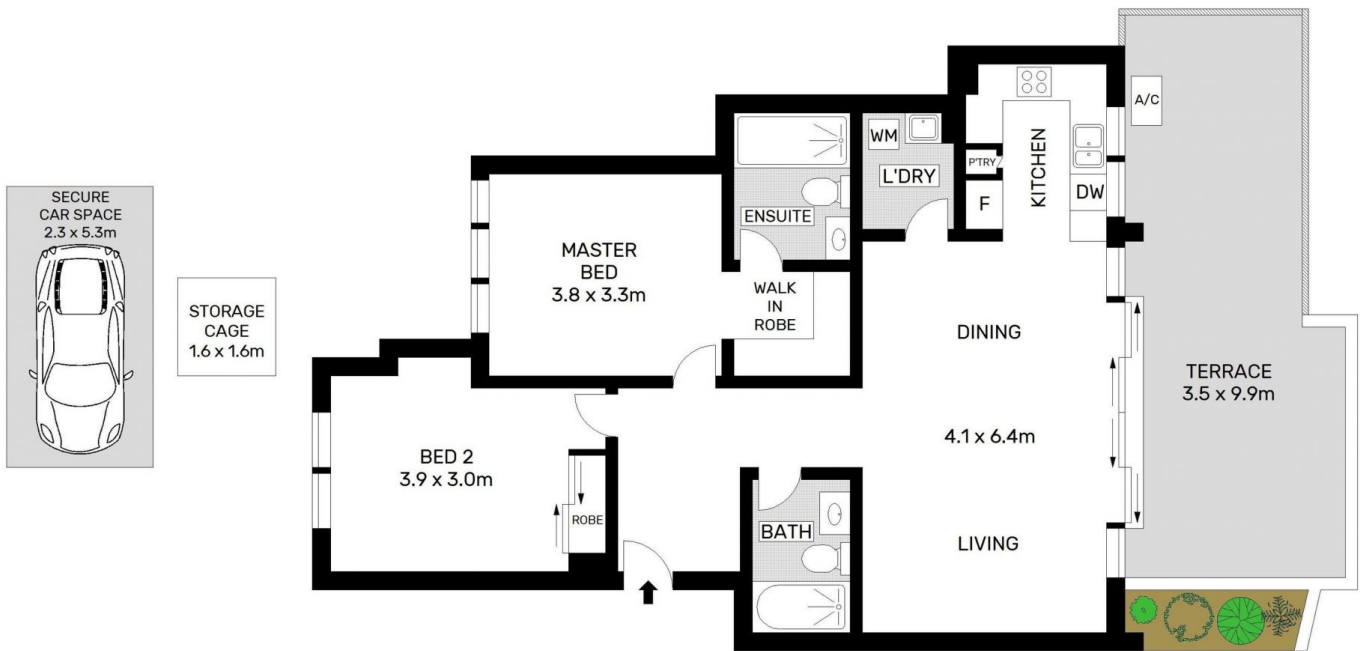
View : <https://www.assetrealty.com.au/sale/nsw/north-s-hore-upper/st-ives/residential/unit/7898469>



Ari Akbarian
02 9498 7799



James Perry
02 9498 7799



1401/169 MONA VALE ROAD, ST IVES

Scale in meters. Indicative only. Dimensions are approximate. All information contained herein is gathered from sources we believe reliable. However we cannot guarantee its accuracy and interested persons should rely on their own enquiry.