



602/25 Lindfield Avenue Lindfield NSW

2 2 1

Located on the Sixth floor with panoramic views over the Sydney Metropolitan area is this two-bedroom unit suited to the high-end dweller. Situated in the heart of Lindfield above Lindfield Shopping Village and adjacent to 'Harris Farm Markets', Lindfield Train Station and Lindfield Village Green, you are spoilt with convenience. Unit 602 is within the exclusive 'The Grove' complex which was architecturally designed by 'Cronin Partners' and developed by 'Aqualand Australia'. The building, location and most importantly the unit will captivate the attention of the most discerning buyer and their guests with its sleek design, superior finishes and commanding build.

Summary Features:

? Two bed unit on level six with panoramic views and sunny north east aspect.

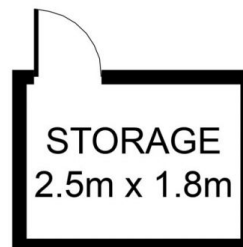
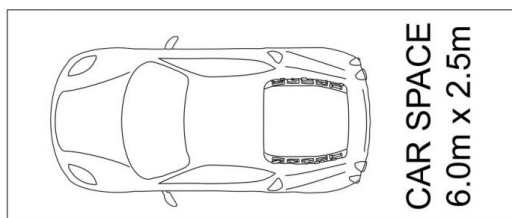
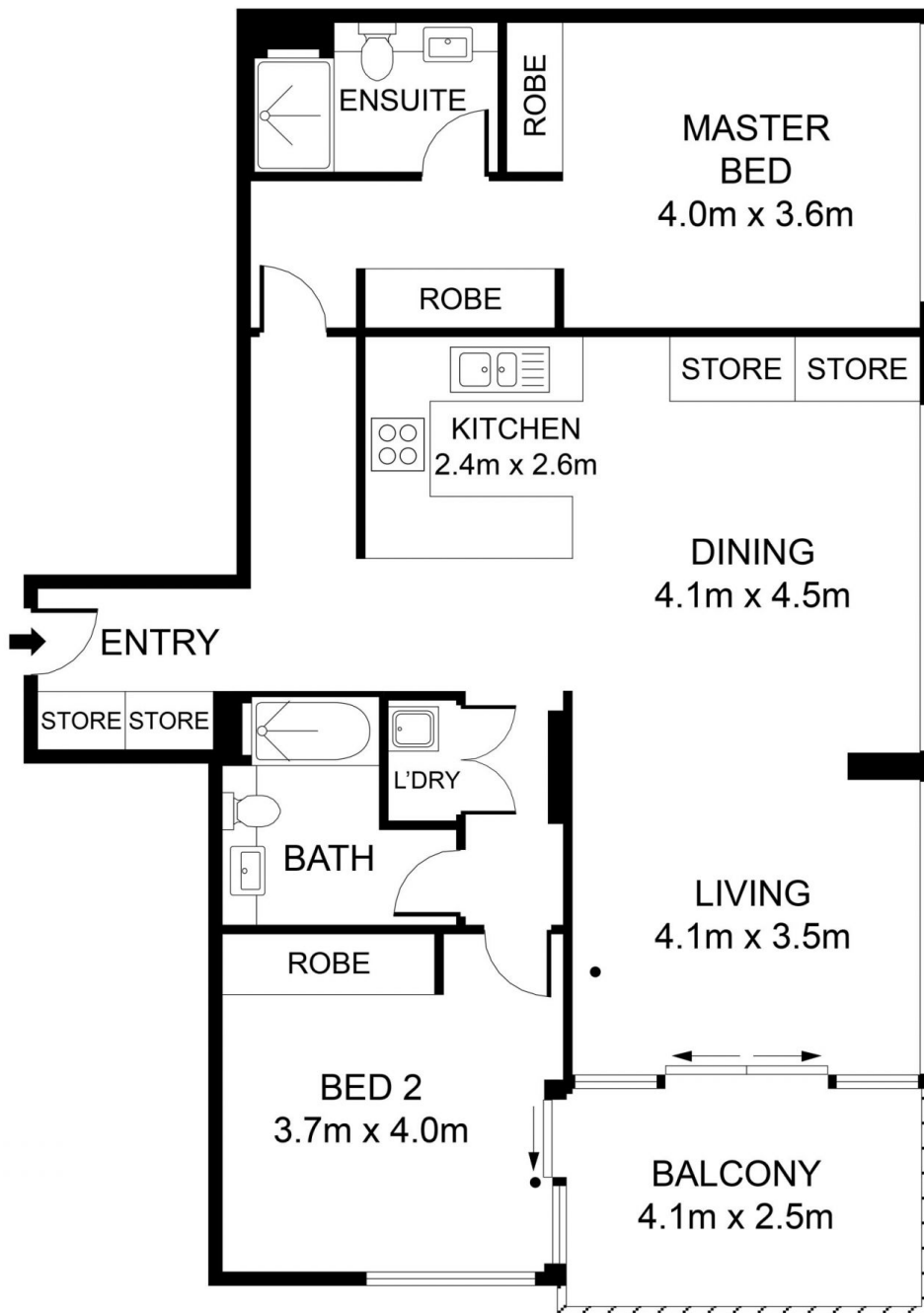
? 100m from train station, adjacent to cafés/restaurants, Lindfield village green/shopping and 'Harris Farm Markets'.

Price : \$ 1,850,000

View : <https://www.assetrealty.com.au/sale/nsw/north-s-hore-upper/lindfield/residential/apartment/7757690>



Ari Akbarian
02 9498 7799



INTERNAL AREA: 101 SQM
EXTERNAL AREA: 10 SQM
TOTAL AREA: 111 SQM

602/25 Lindfield Avenue, Lindfield

ASSET
realty

DISCLAIMER: 3D Property View accepts no liability for the accuracy of details contained within our floor plans. All plans are drawn and also checked to the best of our ability, however information contained in our floor plans such as area calculations are approximate, and have not been surveyed or drawn to scale. Our floor plans are for representational purposes only and should be used as such. Do not attempt to refer to our floor plans for structural or detailed information.