



43 Sylvan Avenue East Lindfield NSW

4 2 2

Family home with Panoramic outlook - First Time Offered in 47 Years!

Located on the high side and boasting water glimpses is this single storey four-bedroom family home, offered for the first time within the sought after suburb of East Lindfield. Nestled on an 848 sqm rectangular shaped plot and zoned R2, there is plenty of scope to create your dream home and capitalise (STCA). The accommodation comprises of polished pine floorboards throughout, original kitchen and bathrooms, four bedrooms (three with built-ins) and a shared ensuite. There are two outdoor entertaining areas being the front verandah and rear deck, internal laundry, split air-conditioning and a double lockup garage. The home is in the East Lindfield Public and Killara High School zones and within proximity to Ravenswood School for Girls, Roseville College (Girls) and Newington College (Boys). For commuters it's only a 400m walk to East Lindfield

Price : \$ 2,480,000

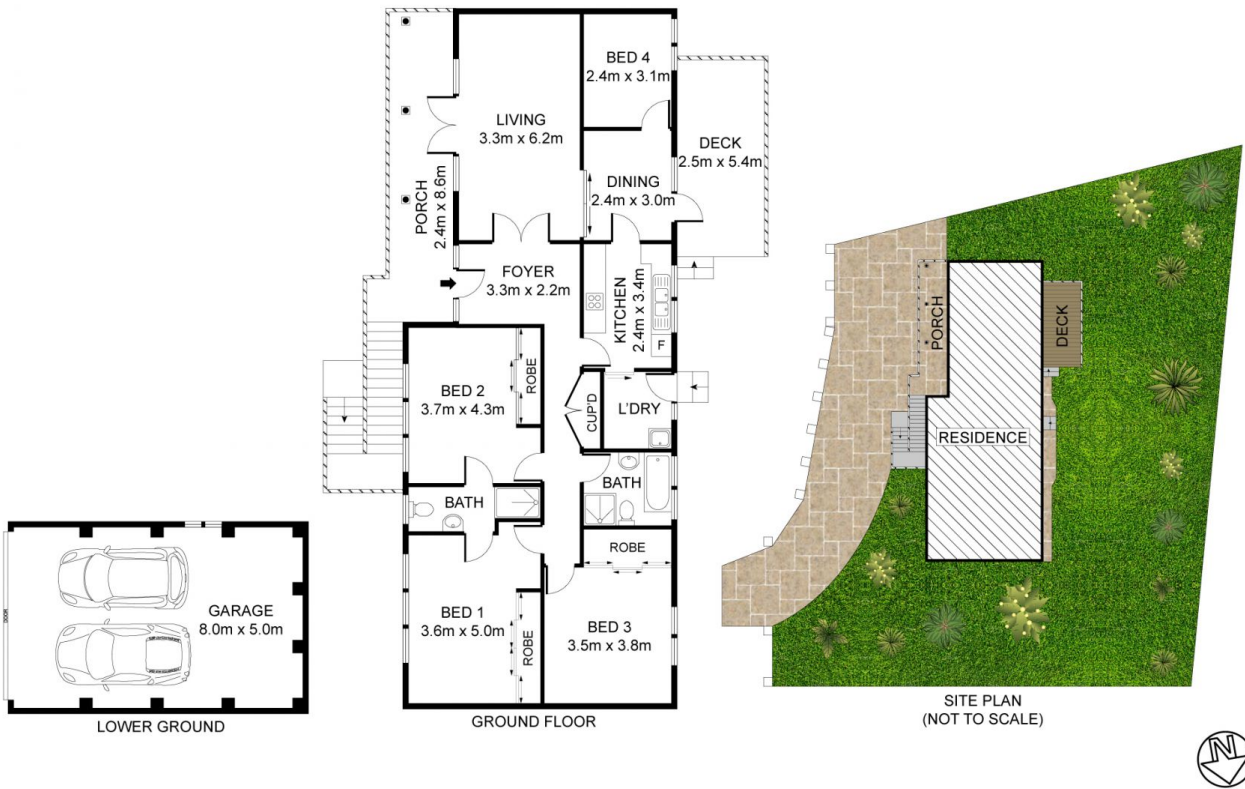
View : <https://www.assetrealty.com.au/sale/nsw/north-s-hore-upper/east-lindfield/residential/house/7708893>



Ari Akbarian
02 9498 7799



Sima Akbarian
02 9498 7799



43 Sylvan Avenue, East Lindfield

ASSET
reality

DISCLAIMER: 3D Property View accepts no liability for the accuracy of details contained within our floor plans. All plans are drawn and also checked to the best of our ability, however information contained in our floor plans such as area calculations are approximate, and have not been surveyed or drawn to scale. Our floor plans are for representational purposes only and should be used as such. Do not attempt to refer to our floor plans for structural or detailed information.

