



7/25 Werona Avenue Killara NSW

1 1 1

Boutique Character Garden apartment to move in or as an investment - Minute Walk to Rail

'Welcome to the Maples', a boutique building of 8 units (Strata title), only 20 metres to Killara Train station.

We are offering, on the ground floor, unit 7 which consists of One Bedroom plus Study and walk-in robe, Lounge/dining, modern kitchen with large pantry, 1 bathroom + extra toilet and a courtyard to enjoy that afternoon cup of tea. Single Lock Up Garage and plenty of on street parking. Within the Killara High School catchment area.

Being at the rear of the block from Werona Avenue, on the Blue-ribbon, leafy, east side Killara locale.

It's arguably the best and will not last long on the market.

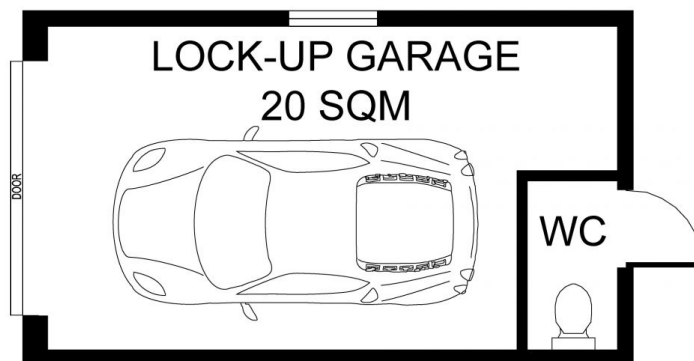
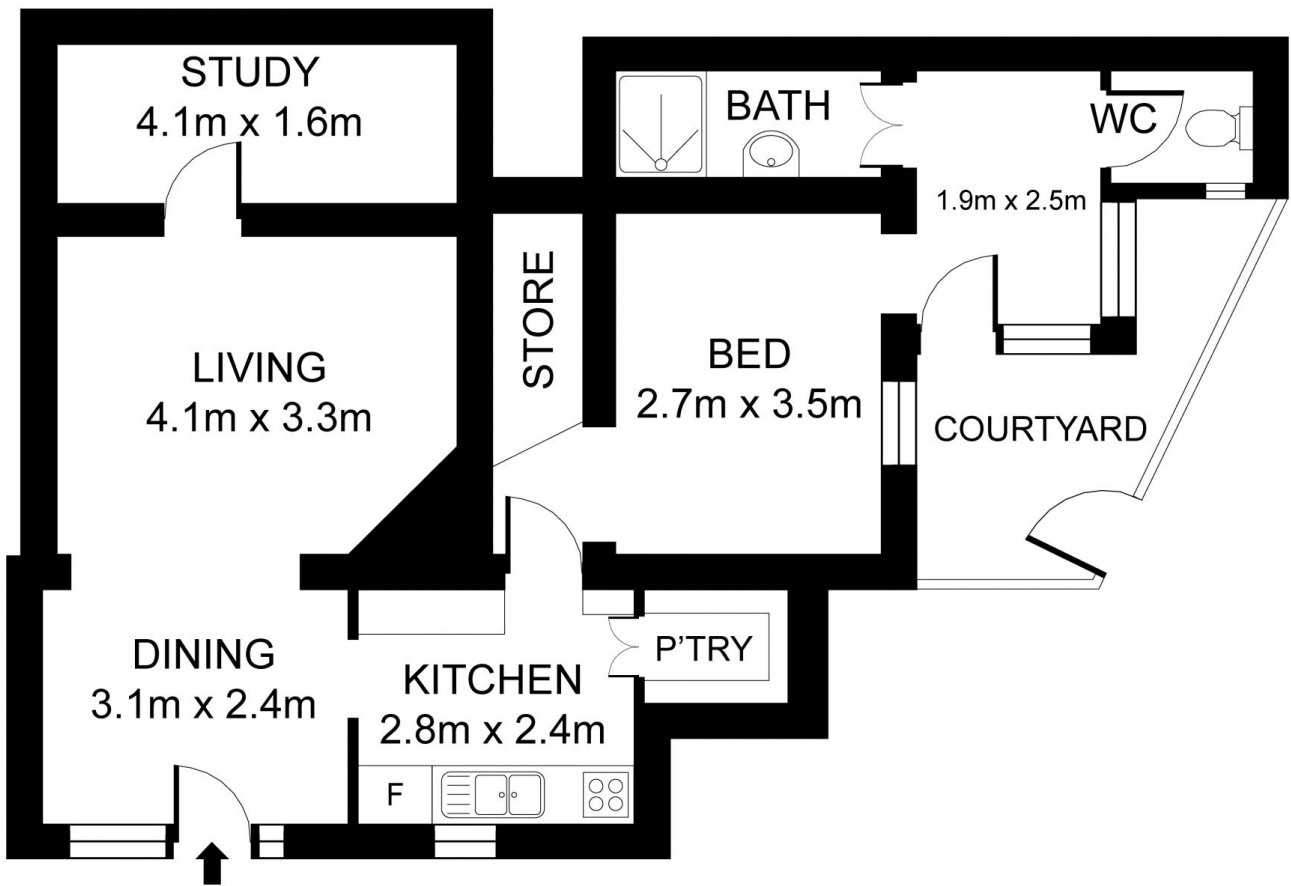
Disclaimer: Asset Realty believes that this information is

Price : \$ 738,000

View : <https://www.assetrealty.com.au/sale/nsw/north-s-hore-upper/killara/residential/apartment/7707790>



Sima Akbarian
02 9498 7799



7/25 Werona Avenue, Killara

INTERNAL AREA INCLUDING COURTYARD: 79 SQM APPROX.
 LOCK UP GARAGE: 20 SQM APPROX.
 TOTAL AREA: 99 SQM APPROX.



DISCLAIMER: 3D Property View accepts no liability for the accuracy of details contained within our floor plans. All plans are drawn and also checked to the best of our ability, however information contained in our floor plans such as area calculations are approximate, and have not been surveyed or drawn to scale. Our floor plans are for representational purposes only and should be used as such. Do not attempt to refer to our floor plans for structural or detailed information.