

## 20/36-40 Culworth Avenue Killara NSW

3 2 2

Spacious 3 Bedroom Apartment - Short Walk to Killara Station!

View : <https://www.assetrealty.com.au/lease/nsw/north-s-hore-upper/killara/residential/apartment/7703151>

This large 3 bedroom apartment set at the back of the building is whisper quiet with the convenience of the train station at your finger tips!

The property features:

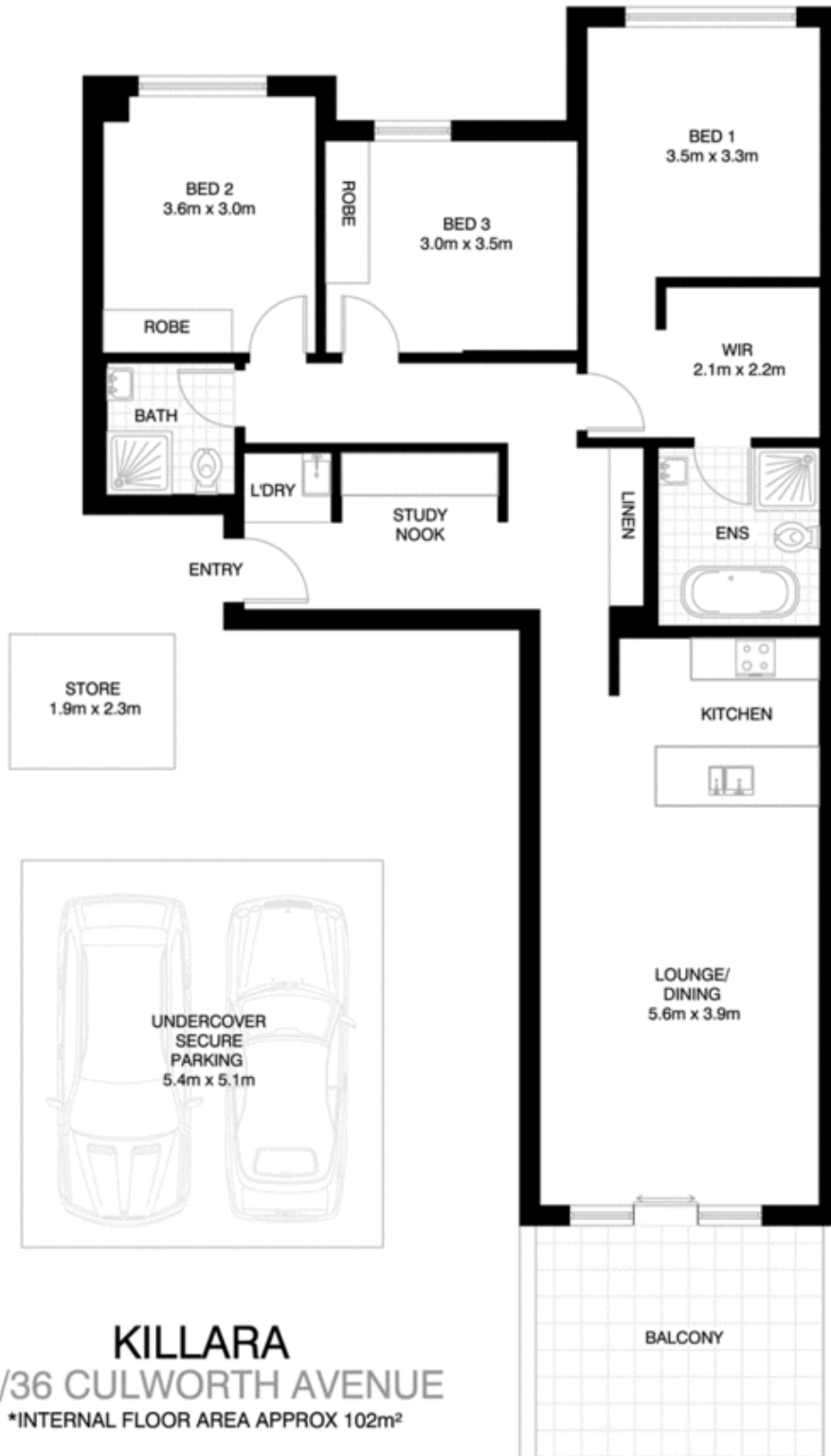
- Designed for a comfortable lifestyle featuring double brick construction and an excellent floor plan.
- 3 bedrooms with built-in robes,
- Main bedroom with walk-in robe & en suite
- Huge amounts of storage space internally
- Combined living/dining area flowing to a large balcony
- Quality kitchen with European stainless steel appliances, dishwasher, microwave and gas cooking
- 2 stylish bathrooms including en suite in main bedroom with bath & floor to ceiling tiles



**Raymond Chen**  
0468 997 811



**Christine Sheridan**  
02 9498 7799



**KILLARA**  
**20/36 CULWORTH AVENUE**  
\*INTERNAL FLOOR AREA APPROX 102m<sup>2</sup>



\*PLANS SHOWN ONLY INDICATIVE OF LAYOUT. DIMENSIONS ARE APPROXIMATE.

Floor plan supplied by V-Mark Design Pty Ltd. This floor plan is provided for indicative purposes only.

Measurements are approximate and not to scale. The vendor, agency and supplier will accept no liability for its accuracy. Interested parties are advised to make their own independent enquiries.