



69 Eton Road Lindfield NSW

3 1 1

Located on a rectangular shaped 898sqm of north to rear land is this double brick family home with scope to add value (Not in Conservation Area).

The home is spacious to live in as is with features such as polished timber floorboards, large windows, high ceilings, detailed cornices, Jetmaster gas flame fireplace and an abundance of natural light. The separate lounge and dining rooms are ideal for the entertainer or large families and the sunroom / study is perfect for those needing a playroom within a growing family.

Centrally located Kitchen with vistas, is fully equipped with Miele gas and electric appliances, Bosch dishwasher and storage abode with a pantry cupboard.

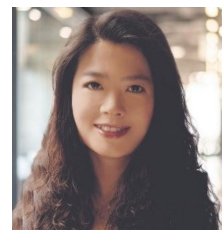
There are three well proportioned bedrooms, with built-ins and are adjacent to the family bathroom with separate W.C. Gas hot water is provided with Gas bayonets around the house.

Land Size : 898 sqm

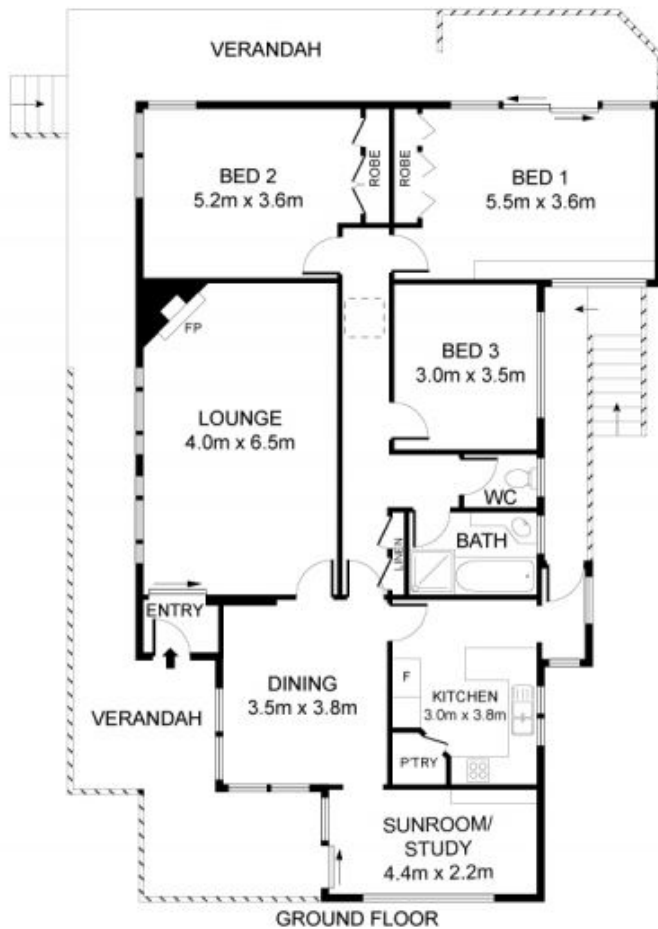
View : <https://www.assetrealty.com.au/sale/nsw/north-shore-upper/lindfield/residential/house/7691488>



Sima Akbarian
02 9498 7799



Anna Chow
02 9498 7799



69 Eton Road, Lindfield

INTERNAL AREA: 236 SQM APPROX.

ASSET
reality

DISCLAIMER: 3D Property View accepts no liability for the accuracy of details contained within our floor plans. All plans are drawn and also checked to the best of our ability, however information contained in our floor plans such as area calculations are approximate, and have not been surveyed or drawn to scale. Our floor plans are for representational purposes only and should be used as such. Do not attempt to refer to our floor plans for structural or detailed information.