



131 Springdale Road East Killara NSW

5 5 2

SOLD BY ANNA CHOW AT STREET RECORD IN EAST KILLARA SINCE 2011

1012 sqm - FULL BRICK MASTERBUILT ARCHITECTURAL DESIGN LUXURY MANSION WITH 20.1M FRONTAGE & CHATSWOOD DISTRICT VIEWS - WALK BUS, KILLARA HIGH & RAIL

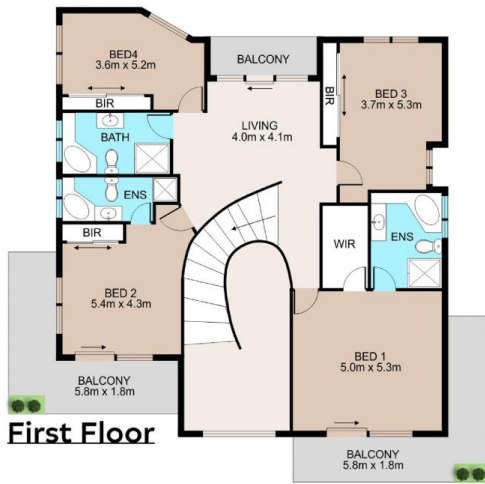
This magnificent masterbuilt full brick architectural design family residence with concrete slabs sets on a prized 1012 sqm of level land on arguably the most exclusive street in East Killara. Millionaire and executive homes are nearby.

Boasting magnificent grand foyer entry with double height grandeur, this stunning masterpiece is bathed in natural light. It offers formal and casual living spaces of grand proportions. It is just minutes walk to city bus, Killara High School, park, bus to rail and Lindfield East Public School.

Price : \$ 5,500,000
Land Size : 1012 sqm
View : <https://www.assetrealty.com.au/sale/nsw/north-shore-upper/east-killara/residential/house/7688950>



Anna Chow
02 9498 7799



Ground Floor Area: 188 sqm
First Floor Area: 155 sqm
Balcony and Verandah: 54 sqm
Garage: 41 sqm
Total Area: 438 sqm



131 Springdale Road, East Killara



DISCLAIMER: PLANS SHOWN ARE FOR MARKETING PURPOSES ONLY, ALL DIMENSIONS ARE APPROXIMATE AND NOT TO SCALE. THEY ARE SUBJECT TO ERRORS AND INACCURACIES AND NO LIABILITY WILL BE ACCEPTED. INTERESTED PARTIES SHOULD MAKE THEIR OWN INQUIRIES.