



4/696 Pacific Highway Killara NSW

2 2 1

2 bedroom Apartment Conveniently Located

- * Two Bedrooms with built-ins
- * Combined living & dining opening onto a balcony
- * Modern gas kitchen with dishwasher
- * 2 x bathrooms (en-suite to main)
- * Large lounge/dining opens to patio area
- * Undercover car space, Air Conditioning
- * Walk to station, shops
- * Killara High Catchment

Available Now

Disclaimer: Asset Realty believes that this information is correct but does not warrant or guarantee the accuracy of the information. Certain information has been obtained from external sources and has not been independently

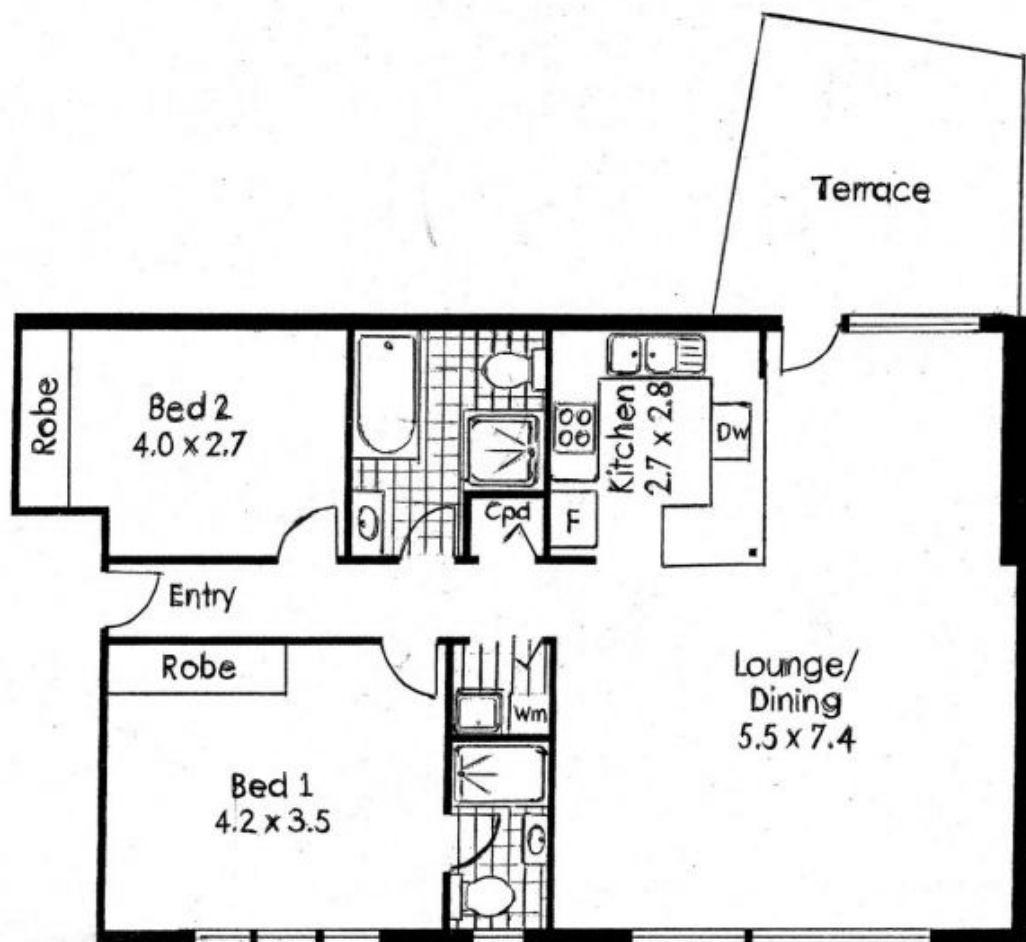
View : <https://www.assetrealty.com.au/lease/nsw/north-sore-upper/killara/residential/apartment/7655640>



Margaret Matthews
02 9498 7799



Renita Yang
02 9498 7799



4/696 Pacific Highway, Killara

*Internal Area Approx. 85 sqm