



12A/803-805 Pacific Highway Gordon NSW

2 2 2

Convenient and spacious two bedroom apartment in Gordon East side
Walk to Station - Move in or Invest!

Price : \$ 985,000

View : <https://www.assetrealty.com.au/sale/nsw/north-s-hore-upper/gordon/residential/apartment/7616108>

This full brick top floor unit bathed in natural light has every amenity a family or commuter would seek. Being only a near level 300 metres from Gordon Shopping centre, 450 metres to Gordon Train Station and 140 metres to Gordon Library, all the conveniences are met on foot here. Well-proportioned and suited to those who like entertaining both the eat-in kitchen and living room face the sliding doors which lead to an oversized balcony with district views.

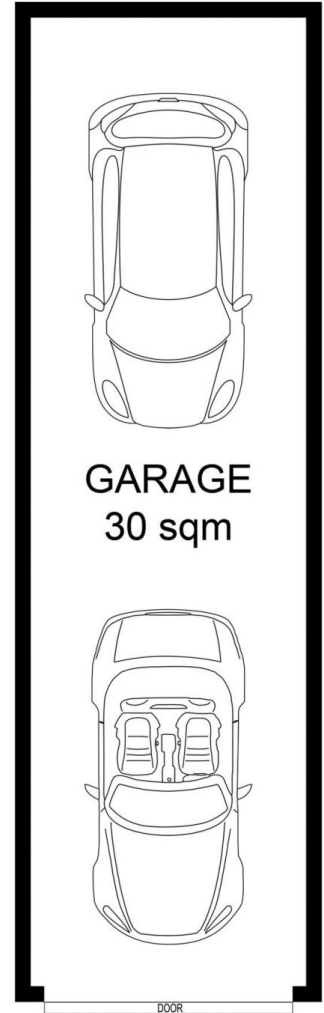
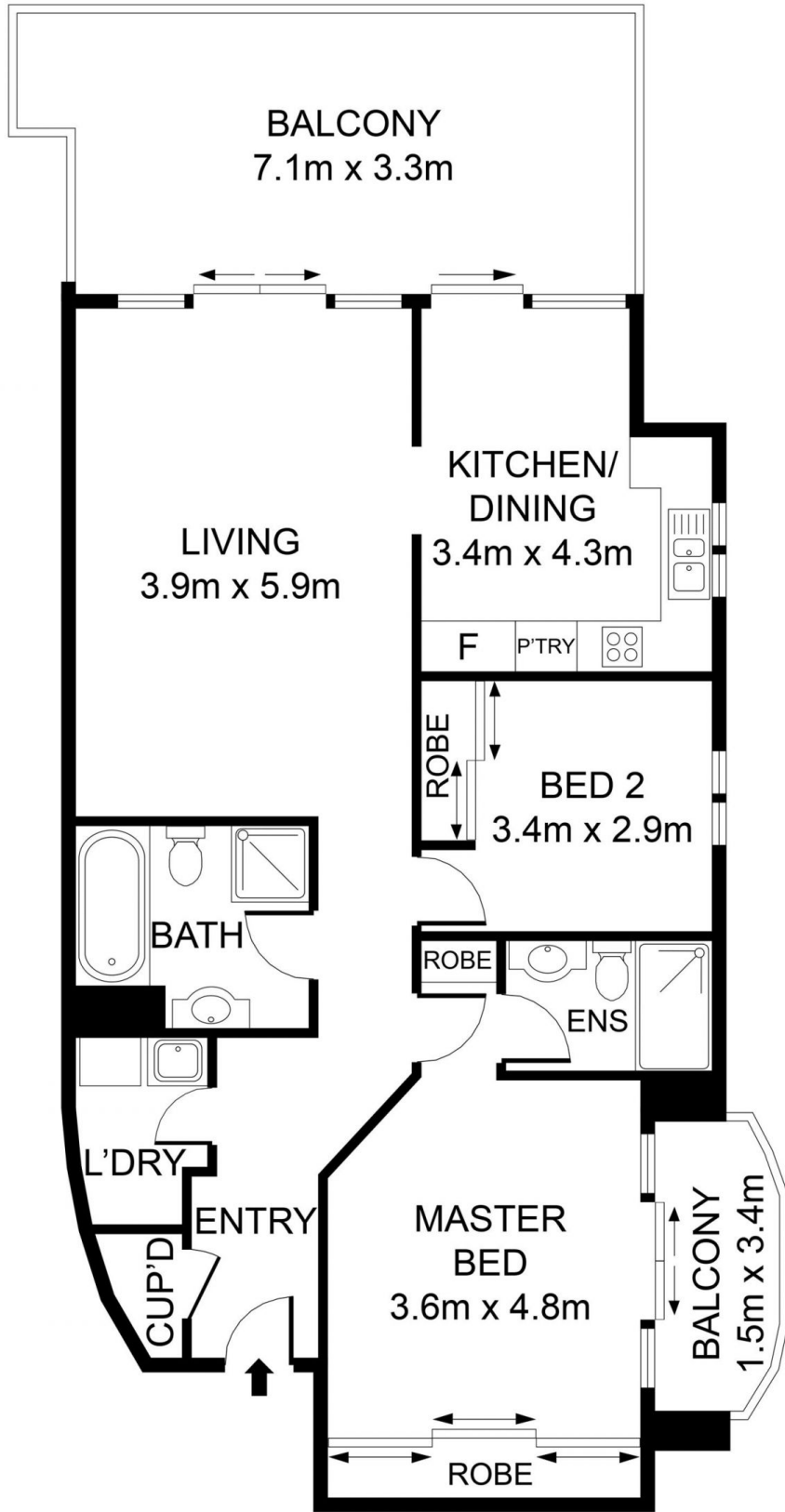
- Combined living and dining with brand new carpet throughout, study nook
- Eat-in kitchen with dishwasher, range hood and gas



Ari Akbarian
02 9498 7799



Sima Akbarian
02 9498 7799



INTERNAL AREA+BALCONY: 132 SQM
 LOCK UP GARAGE: 30 SQM
 TOTAL AREA: 162 SQM

A12/803 Pacific Highway, Gordon



DISCLAIMER: 3D Property View accepts no liability for the accuracy of details contained within our floor plans. All plans are drawn and also checked to the best of our ability, however information contained in our floor plans such as area calculations are approximate, and have not been surveyed or drawn to scale. Our floor plans are for representational purposes only and should be used as such. Do not attempt to refer to our floor plans for structural or detailed information.