



403/183-185 Mona Vale Road St Ives NSW

3 2 2

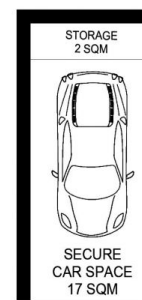
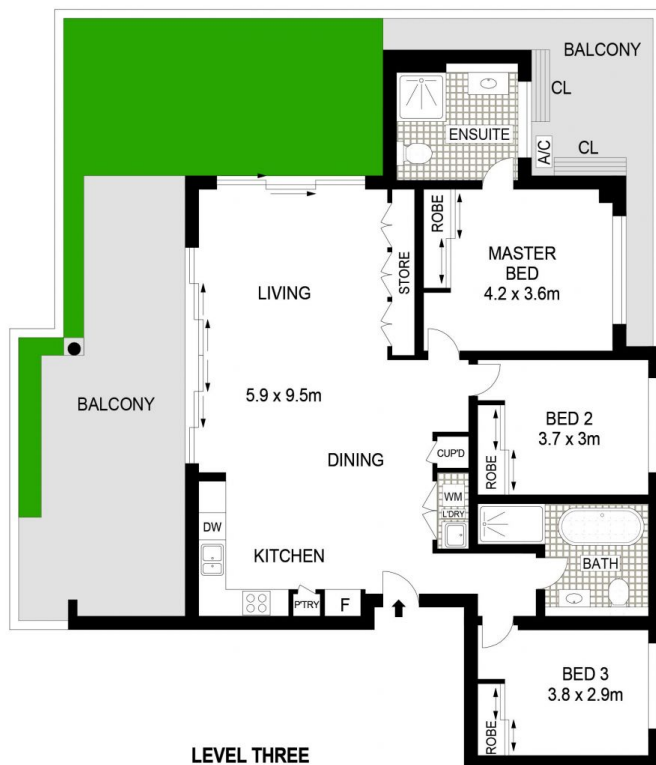
This new style north east facing three bedroom penthouse / skyhome boasts convenience, space, abundance of light and scenic views over the leafy suburb of St Ives. Sharing only two neighbours within this boutique block of only 23 units, you will also gain a sense of security, privacy and being part of a caring community. Located at the rear of the block and with a wraparound terrace, this unit will suit those who are after a house with the benefit of alfresco dining / entertaining all year round. High ceilings and sophisticated glossy tiling create a superb backdrop to a free flowing living / dining room that extends out to the terrace. The open plan kitchen is the ultimate in style and functionality finished with european appliances. Three large bedrooms span across one side of the penthouse with enough space for a family or downsizers looking for comfort. If class and comfort doesn't sell you then convenience will, as you are only across the road (100m approx) from St Ives Shopping

Price : \$ 1,750,000

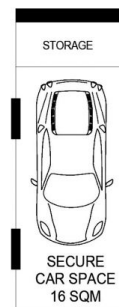
View : <https://www.assetrealty.com.au/sale/nsw/north-s-hore-upper/st-ives/residential/unit/7554883>



Ari Akbarian
02 9498 7799



UPPER BASEMENT



LOWER BASEMENT

Dimensions are approximate. All information contained is gathered from sources we believe to be reliable. However we cannot guarantee its accuracy and interested persons should rely on their own enquiries.
www.visionphoto.com.au

403/183-185 MONA VALE ROAD, ST IVES

APPROX. LIVING AREA: 186 SQM
APPROX. PARKING/ STORAGE AREA: 33 SQM
APPROX. TOTAL AREA: 219 SQM

