



105 Koola Avenue East Killara NSW

6 5 6

SOLD PRIOR TO AUCTION BY ANNA CHOW IN 6 DAYS AT TOP PRICE !

FABULOUS 360° PANORAMIC VIEWS
SUBSTANTIAL FULL BRICK ARCHITECT.
MASTERPIECE - INT. AREA 716 SQM
DA APPROVED FOR FURTHER EXTENSION

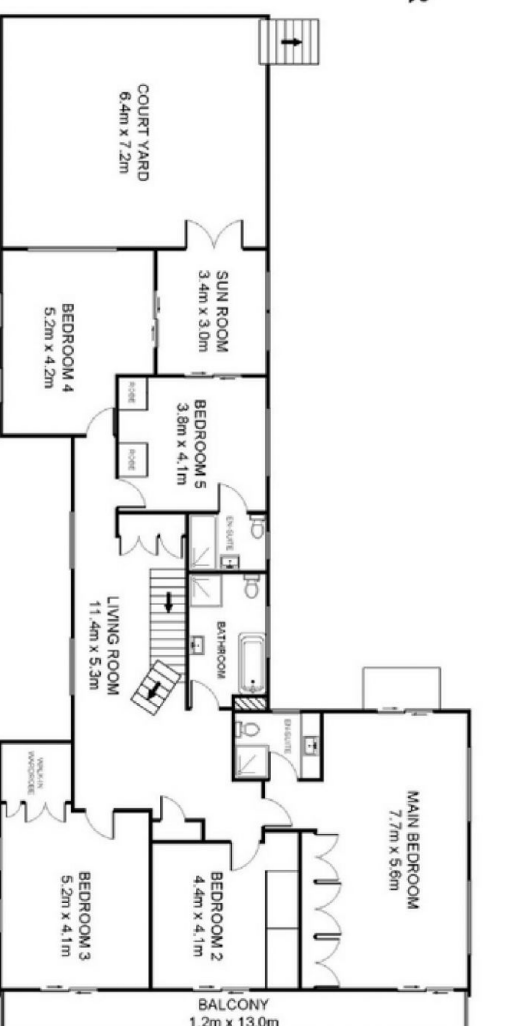
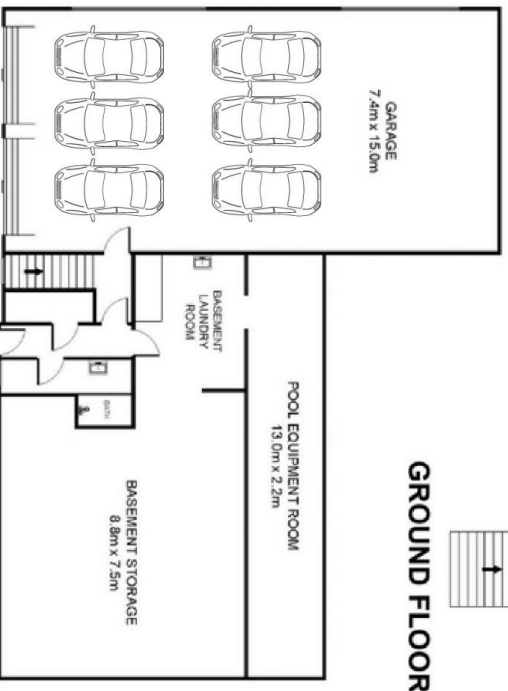
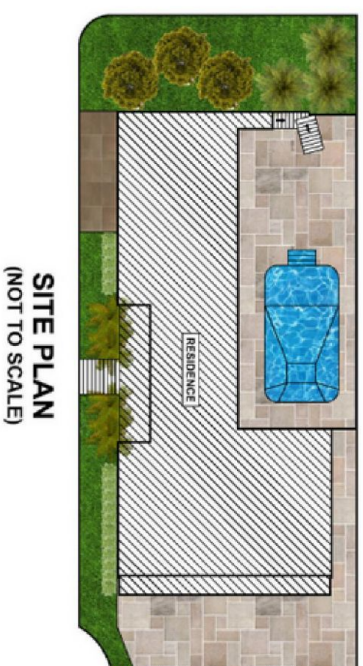
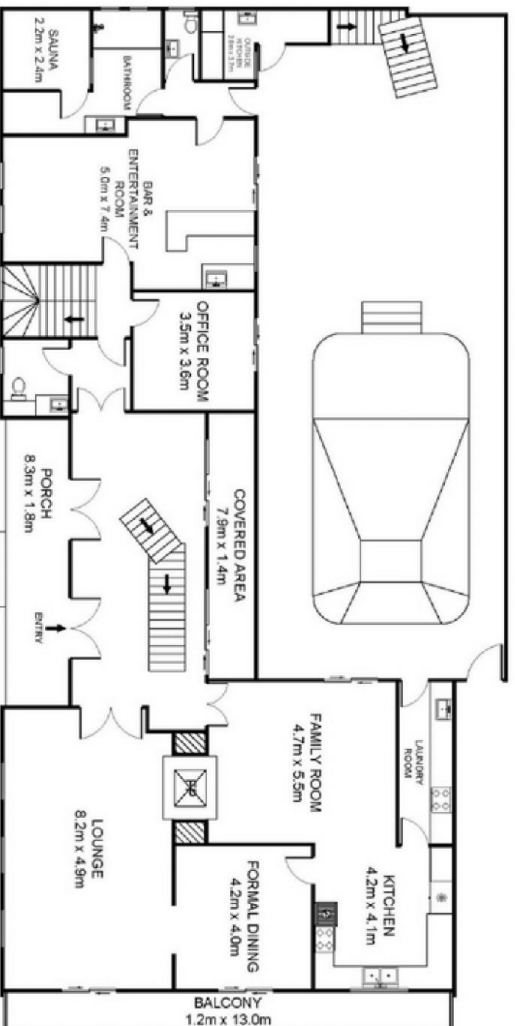
* Masterbuilt full brick & concrete classic contemporary residence (Internal area 716 sqm) designed in sympathy with Nth aspect, level site & uninterrupted views from Garigal National Park, Blue Mountains to City, Eastern Suburbs & Middle Harbour.

* Stunning double entry with sweeping staircase. Large grand formal Lounge w/ custom cabinetry (built in lighting) and Italian designed chandeliers throughout. Separate dining room to terrace enjoying uninterrupted panoramic

Price : \$ 4,700,000
Building Size : 716 sqm
Land Size : 898 sqm
View : <https://www.assetrealty.com.au/sale/nsw/north-shore-upper/east-killara/residential/house/7546708>



Anna Chow
02 9498 7799



105 Koola Ave, East Killara

INTERNAL AREA: 716.0 SQM APPROX.

ASSET
reality

DISCLAIMER: PLANS SHOWN ARE FOR MARKETING PURPOSES ONLY, ALL DIMENSIONS ARE APPROXIMATE AND NOT TO SCALE. THEY ARE SUBJECT TO ERRORS AND INACCURACIES AND NO LIABILITY WILL BE ACCEPTED. INTERESTED PARTIES SHOULD MAKE THEIR OWN INQUIRIES.

