



10 Victoria Avenue West Pymble NSW

We are selling two opportunities on this level parcel of land, conveniently located adjacent to West Pymble Public School. The first is a DIY DA approved property which can be altered to suit your dream ambitions with whichever builder you choose. The second is to buy the whole thing built for you by the luxury builder who prepared this development application.

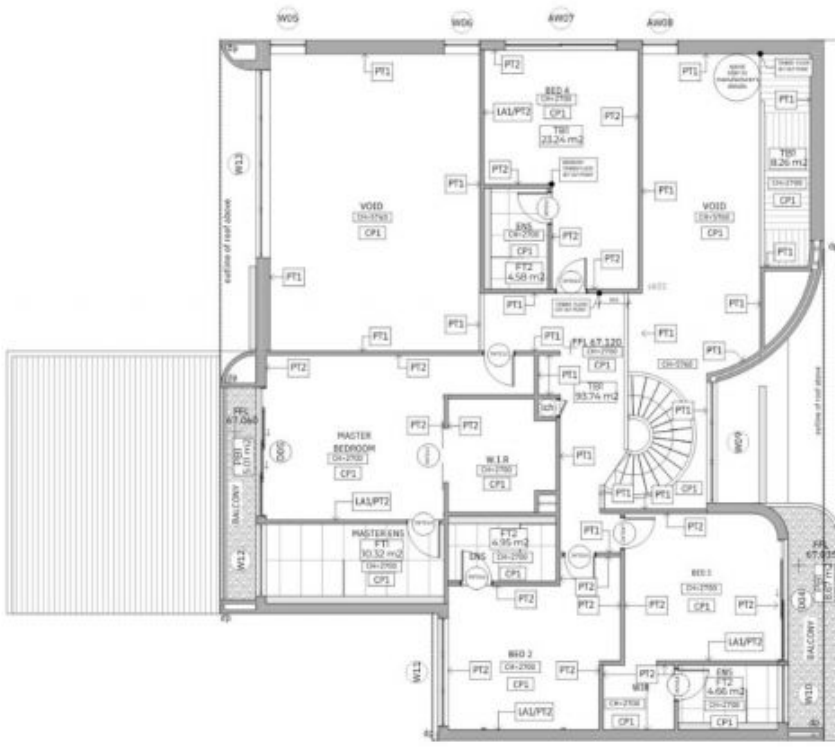
West Pymble has been an up and coming area for a while and has established itself as a premier suburb in the Upper North Shore of Sydney. This home aspires to be the best house in the suburb. With a land size of 936sqm and a near level topography don't miss out on this opportunity.

If you would like an inspection, copy of the contract, DA documentation or a meeting with the Builder, please contact Ari.

Price : \$3,500,000
Land Size : 936 sqm
View : <https://www.assetrealty.com.au/sale/nsw/north-shore-upper/west-pymble/residential/house/7546676>



Ari Akbarian
02 9498 7799



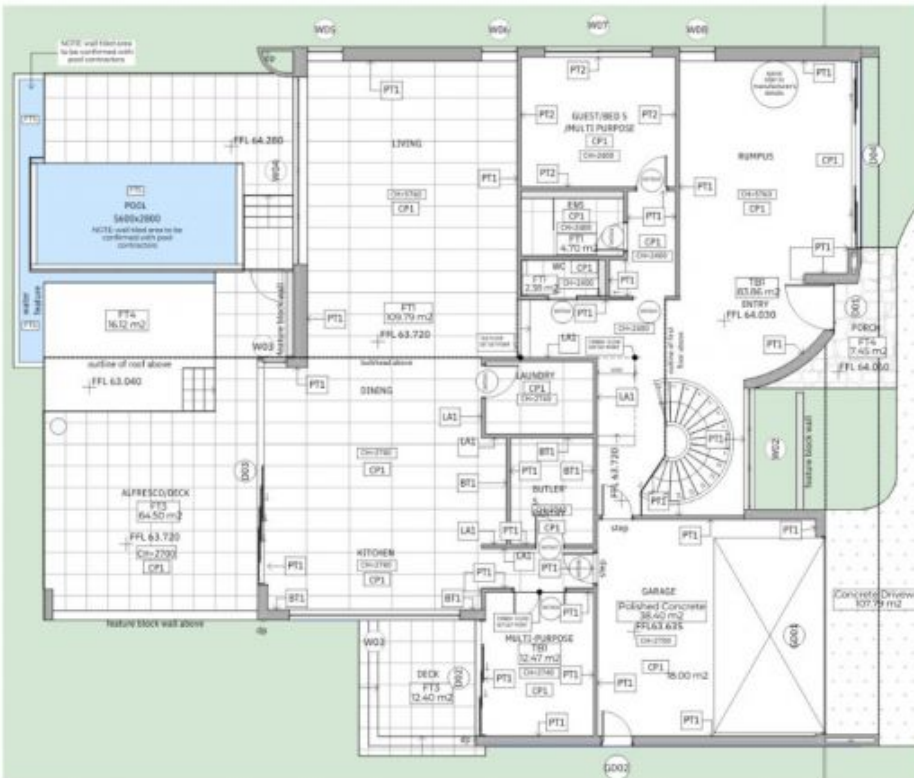
First Floor - Interior Finishes Plan
1:100

FINISHES

TBI Havwoods - HW7902 Venture Plank - Maharry 180mm/13mm Herringbone Length 1800/2200 Note: TBI set out points to be confirmed with Architect. Used floorboard dimension 1600x180mm	W1/F1 EVERSTONE Porcelain Joyce - Perla Size: 1200x600 Finish: Matt R10 Grout Colour - Ardex 341 Misty Grey or Maple 103 Moon White Silicone Colour - Ardex Misty Grey	W12/FT2 EVERSTONE Porcelain Joyce - Bianco Size: 1200x600 Finish: Matt R10 Grout Colour - Ardex 341 Misty Grey or Maple 103 Moon White Silicone Colour - Ardex Misty Grey
FT3 Tile and Bath Co. Bianco Archer Stone Look Tile Size: 600x600 Finish: Matte P4	FT5 Ezari Mosaic Tile Zen Carrara	LA1 New Age Veneers Navurban - Kew Walnut Finish - Smooth Texture
PT1 Wall Paint Dulux Snowy Mountains Half Low Sheen	PT2 Wall Paint/all bedrooms colour TBC	Skirting Intrim - SK25
CP1 Ceiling Paint	PBI Pebbles Dulux Ceiling White + PLUS Tuscan Path Mixed Stone	

ADDRESS
10 Victoria Ave. West Pyrabell

Concept Architectural Plans



Ground Floor - Interior Finishes Plan
1:100

FINISHES

TBI Havwoods - HW7902 Venture Plank - Maharry 180mm/13mm Herringbone Length 1800/2200 Note: TBI set out points to be confirmed with Architect. Used floorboard dimension 1600x180mm	W1/F1 EVERSTONE Porcelain Joyce - Perla Size: 1200x600 Finish: Matt R10 Grout Colour - Ardex 341 Misty Grey or Maple 103 Moon White Silicone Colour - Ardex Misty Grey	W12/FT2 EVERSTONE Porcelain Joyce - Bianco Size: 1200x600 Finish: Matt R10 Grout Colour - Ardex 341 Misty Grey or Maple 103 Moon White Silicone Colour - Ardex Misty Grey
FT3 Tile and Bath Co. Bianco Archer Stone Look Tile Size: 600x600 Finish: Matte P4	FT4 Porch & Fireplace area Artisanexterior Sokera Crazy Paving	FT5 Ezari Mosaic Tile Zen Carrara
LA1 New Age Veneers Navurban - Kew Walnut Finish - Smooth Texture	PT1 Wall Paint Dulux Snowy Mountains Half Low Sheen	PT2 Wall Paint/all bedrooms Porter colour TBC French Wash Texture Finish
Skirting Intrim - SK25 230mm wide x 18mm thick Finish - F3 Pine Primed Paint + Dulux Snowy Mountains Half Low Sheen	CP1 Ceiling Paint	Garage Driveway Geestone

ADDRESS
10 Victoria Ave. West Pyrabell

Concept Architectural Plans