



**905/1 Mooltan Avenue Macquarie Park NSW**

2 2 1

**SOLD ! SOLD BY ANNA CHOW AT TOP PRICE IN 8 DAYS !**

This sunny and bright superb security apartment is located in the 'Melbourne' Building of Macquarie Park Village. It is just short stroll to supermarket, shops, Metro, bus transport, Macquarie University, Macquarie shopping centre and adjacent to local business districts. This resort style urban village offers outdoor heated pool, health club facilities such as gym, tree lined avenues and communal gardens.

Feature includes -

\* 2/3 bedrooms, study (3rd bed), 2 bathrooms (master ensembles). Strata total area : 139 sqm

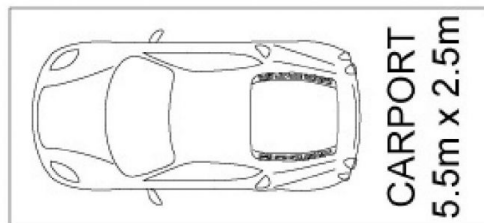
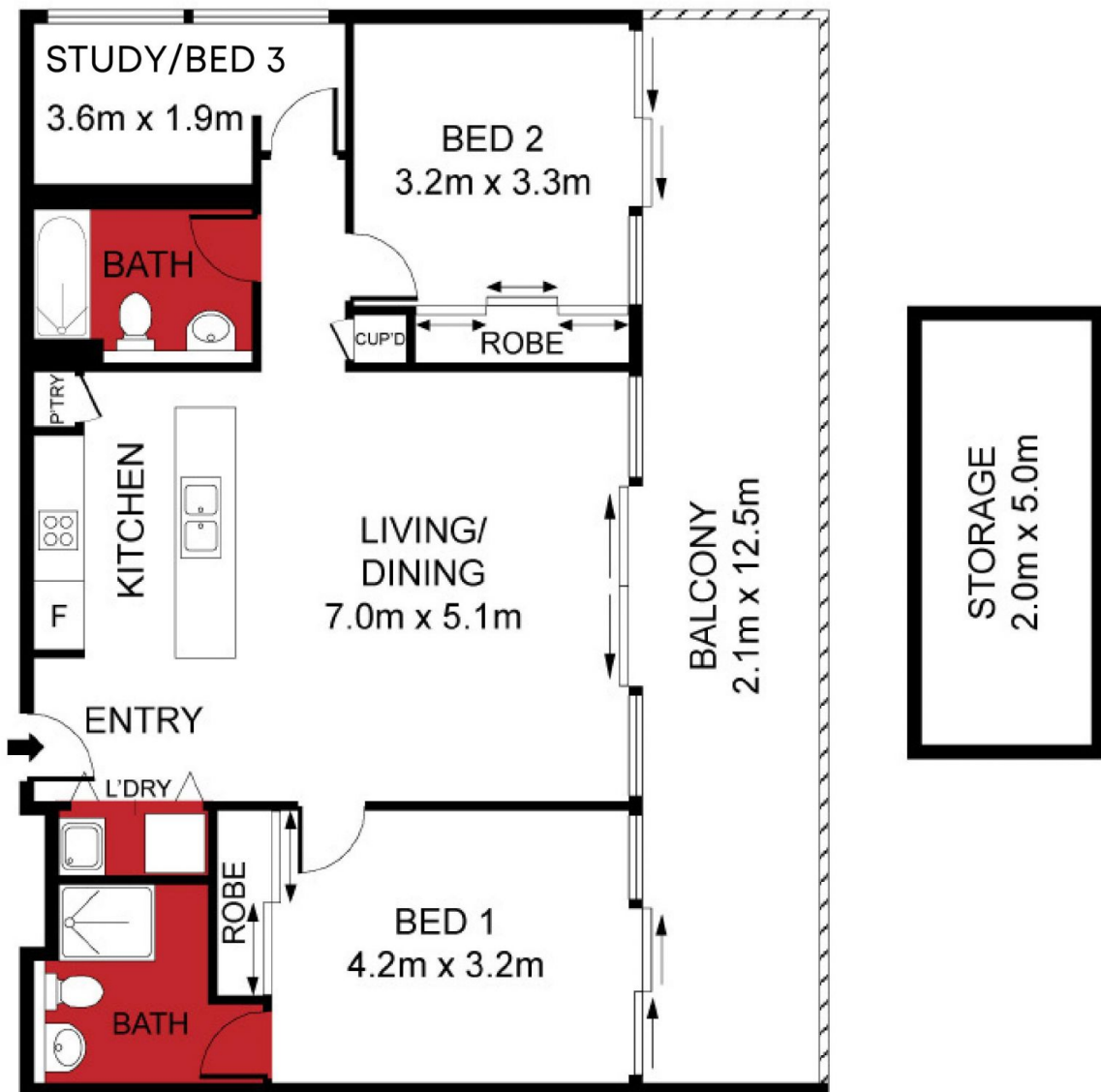
\* Designer open plan kitchen with island, Caesar stone benchtops, gas stove, stainless steel Smeg appliances and integrated fridge

**Price** : \$ 1,030,000

**View** : <https://www.assetrealty.com.au/sale/nsw/northern-suburbs/macquarie-park/residential/apartment/7464870>



**Anna Chow**  
02 9498 7799



INTERNAL AREA: 88 SQM APPROX  
 BALCONY: 26 SQM APPROX  
 STORAGE: 10 SQM APPROX  
 CAR SPACE: 15 SQM APPROX

**905/1 Mooltan Avenue, Macquarie Park**

**ASSET**  
*reality*

DISCLAIMER: 3D Property View accepts no liability for the accuracy of details contained within our floor plans. All plans are drawn and also checked to the best of our ability, however information contained in our floor plans such as area calculations are approximate, and have not been surveyed or drawn to scale. Our floor plans are for representational purposes only and should be used as such. Do not attempt to refer to our floor plans for structural or detailed information.