



**557E/17-19 Memorial Avenue St Ives NSW**

2 2 1

Modern Apartment across from St Ives shopping Village - St Ives North School Catchment zone

This 2 bedrooms apartment is stylish, bright and spacious, finished to a high standard and perfectly positioned in one of St Ives's most sought after complexes. Only 300 meters to St Ives shopping Village, cafes, restaurants and walking distance to prestigious public and private school such as St Ives north public school, Masada college etc.

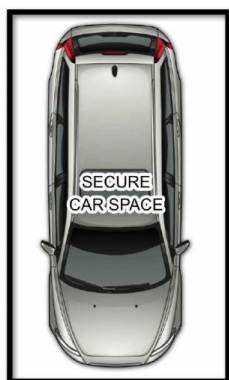
Features of the Apartment:

- Two spacious bedrooms plus 1 study hub
- North facing with abundant natural light and balcony overlooking gardens
- Spacious open-plan living and dining room
- Beautifully appointed gourmet gas kitchen fitted with quality appliances
- Internal laundry with clothes dryer, reverse cycle air

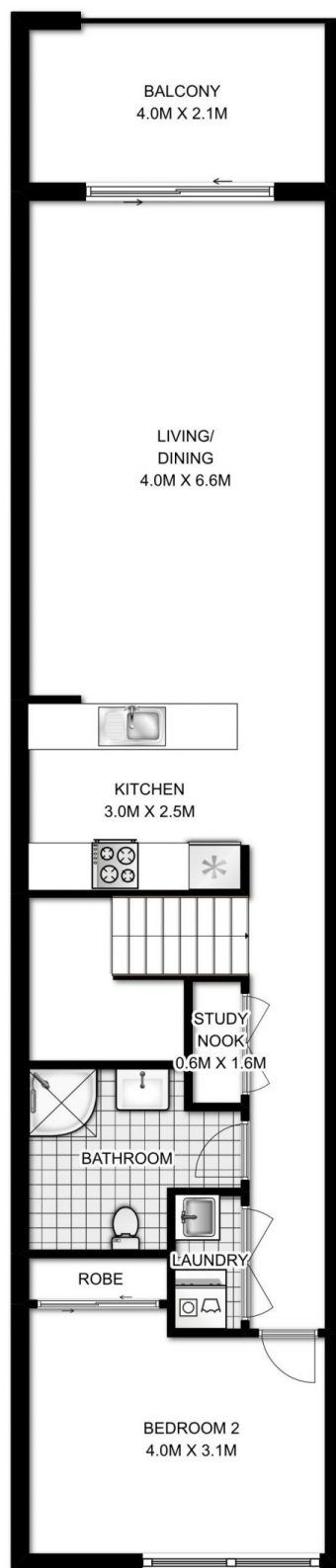
**View :** <https://www.assetrealty.com.au/lease/nsw/north-s-hore-upper/st-ives/residential/apartment/7341431>



**Christine Sheridan**  
02 9498 7799



LOWER LEVEL



UPPER LEVEL

Internal Area + Balcony: 104 SQM.  
Car space: 15 SQM.  
Total Area: 119 SQM.

557/17-19 Memorial Avenue, St. Ives



DISCLAIMER: 3D Property View accepts no liability for the accuracy of details contained within our floor plans. All plans are drawn and also checked to the best of our ability, however information contained in our floor plans such as area calculations are approximate, and have not been surveyed or drawn to scale. Our floor plans are for representational purposes only and should be used as such. Do not attempt to refer to our floor plans for structural or detailed information.