

9 Allawah Road Pymble NSW

4 3 2

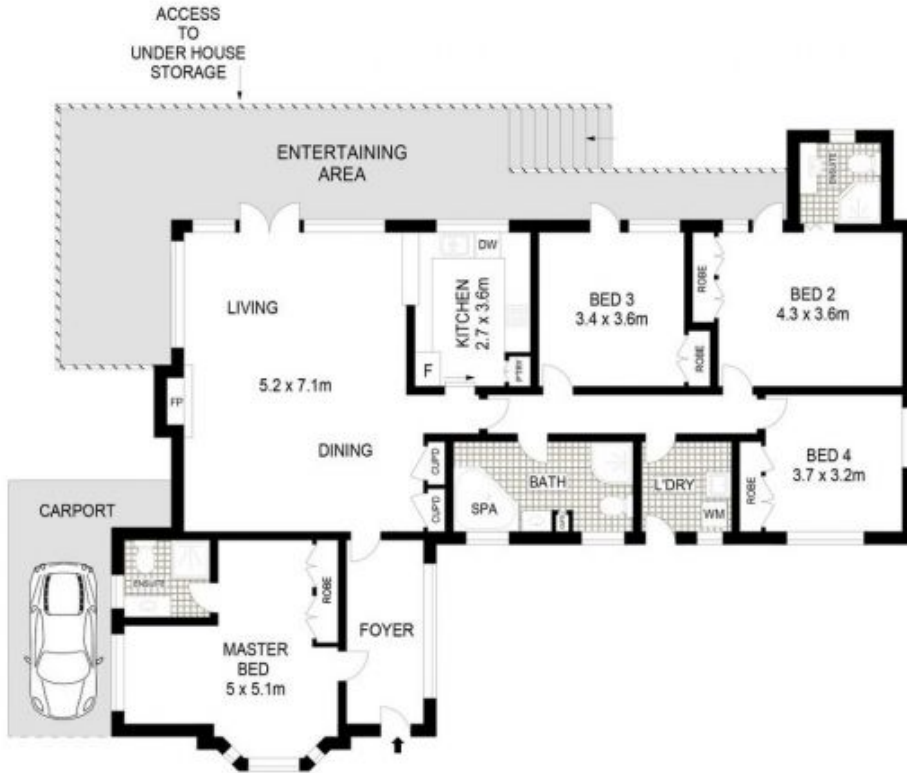
This full brick single level family home is positioned in a highly desirable walk to Pymble Ladies College, the bus, rail and local shops setting and within the Pymble Public School catchment.

View : <https://www.assetrealty.com.au/lease/nsw/north-sore-upper/pymble/residential/house/7331225>

- 4 bedrooms all with built-in wardrobes, 2 bedrooms with ensuites
- Light and bright open plan living and dining with reverse cycle air conditioning opening out to large wraparound alfresco terrace overlooking tranquil leafy back garden
- 3 bathrooms, main bathroom with spa bath
- Brand new kitchen with stone benchtops, electric cooktop and quality appliances
- Lots of storage
- Brand new timber flooring in living areas, brand new carpet in bedrooms and freshly painted throughout
- Solid full brick home with high ceilings throughout



Christine Sheridan
02 9498 7799



Dimensions are approximate. All information contained is gathered from sources we believe to be reliable. However we cannot guarantee its accuracy and interested persons should rely on their own enquiries.
www.visionphoto.com.au

9 ALLAWAH ROAD, PYMBLE
 APPROX. INTERNAL FLOOR AREA: 155 SQM

