

754E/17-19 Memorial Avenue St Ives NSW

3  **2**  **2** 

Enjoying an ideal location with views over the Village Green, this stunning top floor apartment is wonderfully private and immaculately presented, with well-proportioned interior extends to an enormous wrap-around entertaining terrace, creating a spacious indoor/outdoor effect. Simply a stroll to St Ives Village and buses to the city and rail.

View : <https://www.assetrealty.com.au/lease/nsw/north-hore-upper/st-ives/residential/apartment/7306670>

- * Level security entry with elevator access to apartment
- * 233sqm of indoor/outdoor living Open plan entertaining flows outdoors
- * Expansive terrace for all year round relaxation
- * Designer kitchen, Caesarstone benchtops
- * Stainless steel Smeg appliances, gas cooking



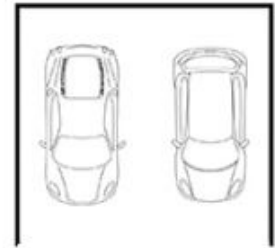
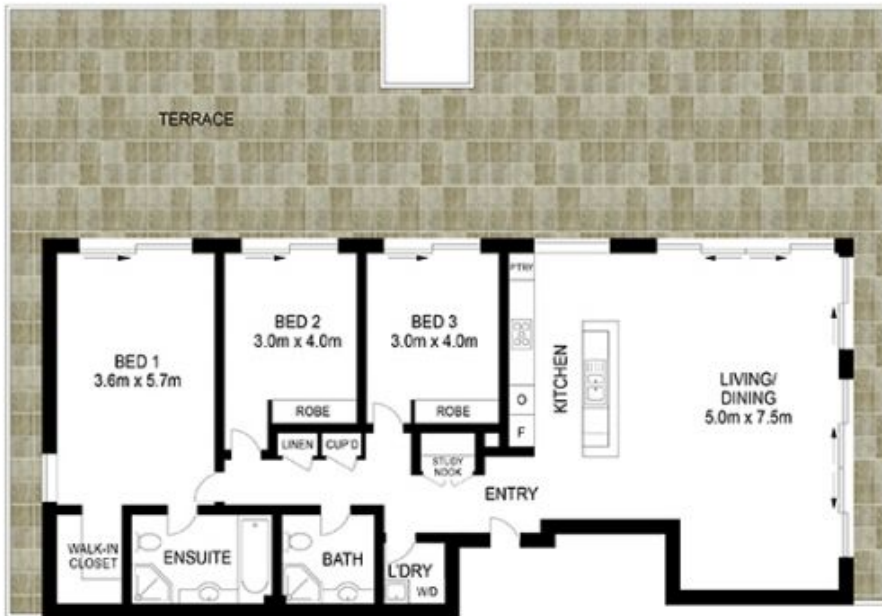
Margaret Matthews
02 9498 7799



Christine Sheridan
02 9498 7799

ASSET

realty



SECURITY PARKING



APPROX INT: 133 m²
TERRACE: 103 m²
CAR SPACE: 31 m²



Scale in metres. Indicative only. Dimensions are approximate. All information contained herein is gathered from sources we believe to be reliable. However, we cannot guarantee its accuracy and interested persons should rely on their own enquiries.

754E/17-19 Memorial Avenue, St Ives