

## 20/36-40 Culworth Avenue Killara NSW

3 2 2

Spacious 3 Bedroom Apartment - Short Walk to Killara Station!

View : <https://www.assetrealty.com.au/lease/nsw/north-hore-upper/killara/residential/apartment/7155126>

TO APPLY FOR THIS PROPERTY PLEASE GO TO OUR WEBSITE:

<https://www.assetrealty.com.au/lease/residential/> AND CLICK "APPLY"

This large 3 bedroom apartment set at the back of the building is whisper quiet with the convenience of the train station at your finger tips!

The property features:

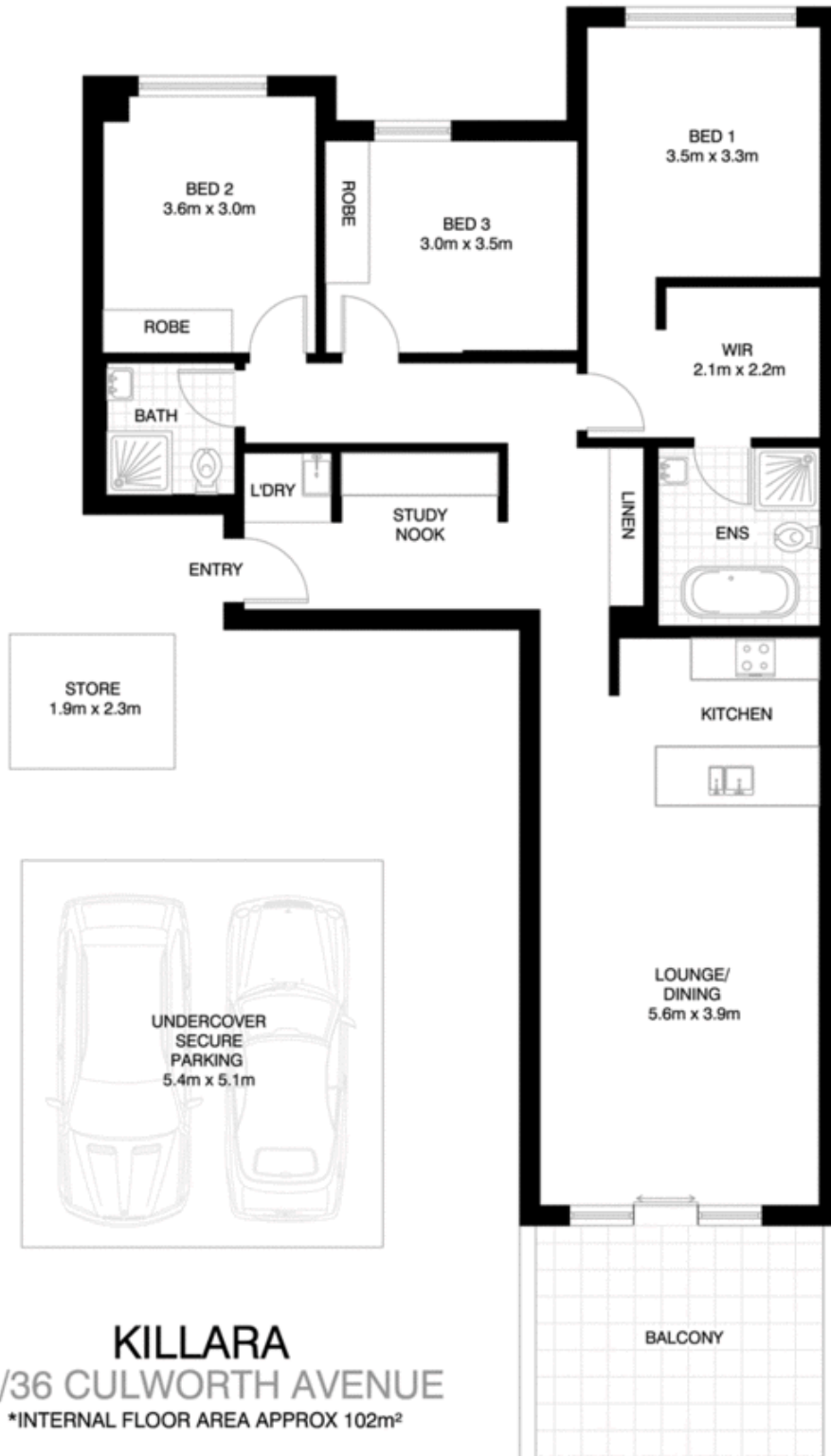
- Designed for a comfortable lifestyle featuring double brick construction and an excellent floor plan.
- 3 bedrooms with built-in robes,
- Main bedroom with walk-in robe & en suite
- Huge amounts of storage space internally



**Raymond Chen**  
0468 997 811



**Christine Sheridan**  
02 9498 7799



## KILLARA 20/36 CULWORTH AVENUE

\*INTERNAL FLOOR AREA APPROX 102m<sup>2</sup>



\*PLANS SHOWN ONLY INDICATIVE OF LAYOUT. DIMENSIONS ARE APPROXIMATE.

Floor plan supplied by V-Mark Design Pty Ltd. This floor plan is provided for indicative purposes only.

Measurements are approximate and not to scale. The vendor, agency and supplier will accept no liability for its accuracy. Interested parties are advised to make their own independent enquiries.