



10 Saiala Road East Killara NSW

6 3 2

ANOTHER SOLD PRIOR TO AUCTION BY ANNA CHOW
- AGENT OF THE YEAR 2015-2022

GRAND LUXURY FULL BRICK HOME - LEVEL LAND -
NORTH TO REAR

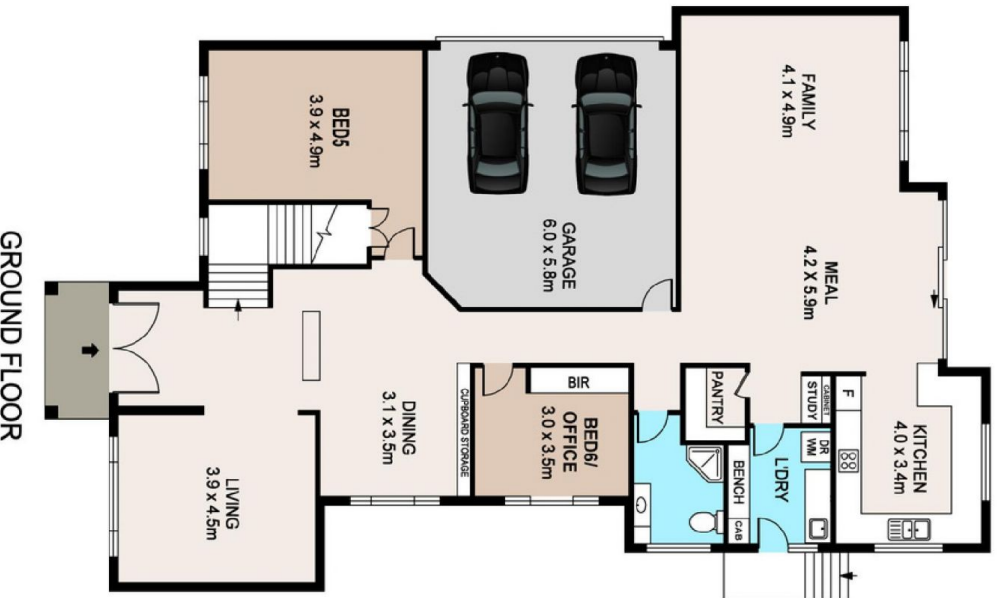
Welcome to this two-storey custom built full brick luxury home with concrete slab and high ceilings throughout. On a rectangular block with a commanding street presence, this property will appeal to the buyer who seeks a large home with little maintenance. It offers a grand foyer, formal Lounge, multiple dining areas and informal lounge opening to sunny terrace, there is plenty of space to entertain or chill with the family.

Short stroll to shops (230m), Killara High (500m), tennis court and bus to Killara/Lindfield station and Lindfield East Public. Minutes drive to Chatswood & 20 min. drive to City. Close to Ravenswood, Pymble Ladies College, Knox

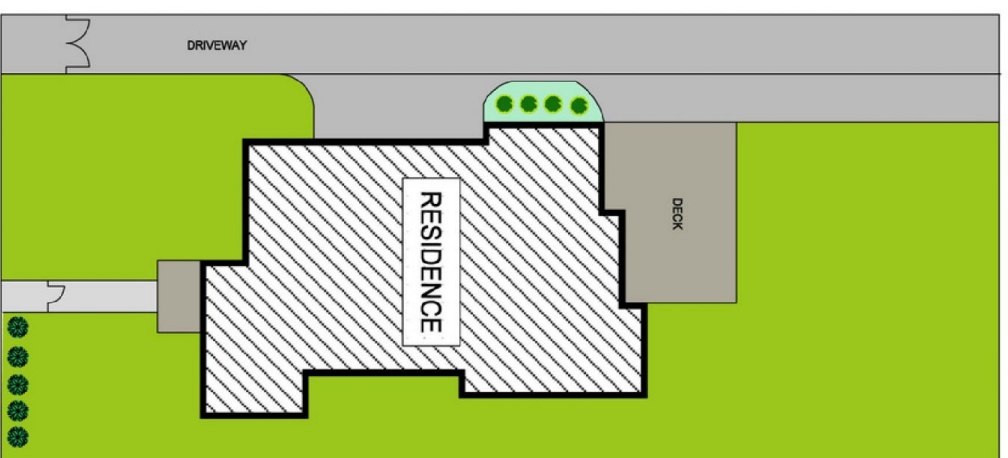
Price : \$ 4,450,000
Land Size : 815.2 sqm
View : <https://www.assetrealty.com.au/sale/nsw/north-shore-upper/east-killara/residential/house/7035411>



Anna Chow
02 9498 7799



Ground Floor Area: 194 Sqm
 First Floor Area: 129 Sqm
 Total Area: 323 Sqm



10 SAIALA ROAD, EAST KILLARA

DISCLAIMER - PLANS SHOWN ARE FOR MARKETING PURPOSES ONLY. ALL DIMENSIONS ARE APPROXIMATE AND NOT TO SCALE. THEY ARE SUBJECT TO ERRORS AND INACCURACIES AND NO LIABILITY WILL BE ACCEPTED. INTERESTED PARTIES SHOULD MAKE THEIR OWN INQUIRES.

