



72 Pacific Highway Roseville NSW

2 🚗

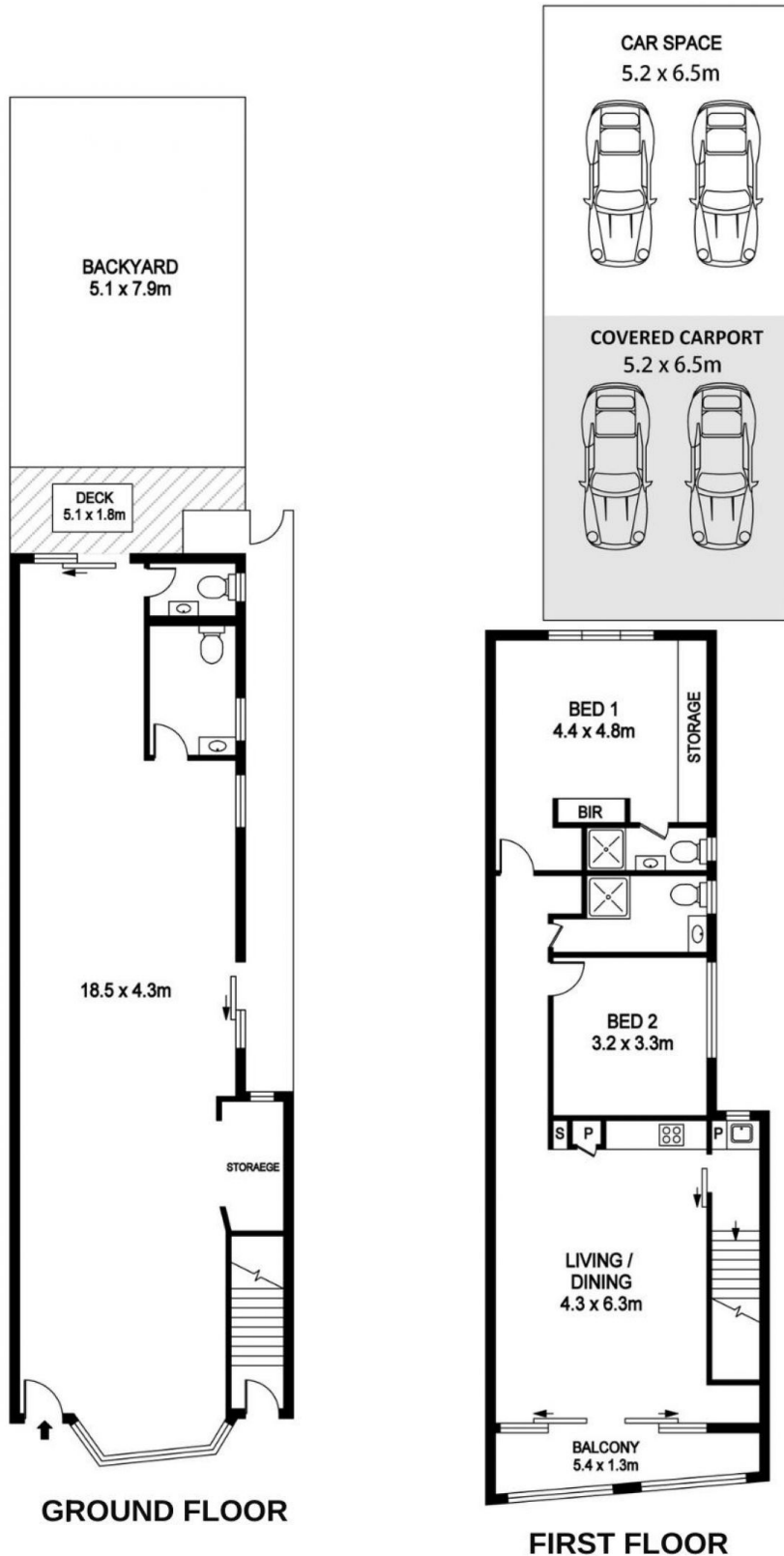
This 2 storey freehold property with land size of 126.5 sqm offers window frontage and signage with great exposure to Pacific Highway. It is centrally located within the shopping precinct and only moments from Roseville station. Suitable for a variety of retail, commercial, medical and consulting type uses (STCA).

Price : Contact Agent
Building Size : 173.6 sqm
Land Size : 126.5 sqm
View : <https://www.assetrealty.com.au/sale/nsw/north-shore-upper/roseville/commercial/retail/6848872>

- * 88 sqm approx Shop area on G/F.
- * 85 sqm approx Unit area on 1/F
- * Private backyard with level lawn
- * Rear access with 2 carport & 2 car spaces
- * Upstairs 2 bedrooms unit with ensuites and balcony with sep entry
- * Own bathroom amenities including disabled bathroom and air conditioning for both levels
- * Zoning : B2 Local Centre under the provisions of Ku-ring-gai Local Environmental Plan 2015.



Anna Chow
02 9498 7799



First floor internal area + Balcony 85.5 m² Approx
 Ground floor internal area 88.1 m² Approx.

72 Pacific Highway, Roseville



DISCLAIMER PLANS SHOWN ARE FOR MARKETING PURPOSES ONLY, ALL DIMENSIONS ARE APPROXIMATE AND NOT TO SCALE. THEY ARE SUBJECT TO ERRORS AND INACCURACIES AND NO LIABILITY WILL BE ACCEPTED. INTERESTED PARTIES SHOULD MAKE THEIR OWN INQUIRES.

ASSET
realty