



639D/17-19 Memorial Avenue St Ives, NSW



## Treetops Tranquillity - Modern 2-Bedroom Apartment Nestled Among the Beautiful Surroundings of the Exclusive "Loralea Gardens"

This immaculate 2-bedroom apartment boasting a tranquil leafy outlook is set within the highly-coveted and exclusive "Loralea Gardens", conveniently located in the heart of St Ives. Enjoy the peaceful ambience among the beautiful vistas of the complex's manicured gardens from your large entertaining balcony that seamlessly flows onto the open plan living/dining room and modern gourmet kitchen. The 2 bedrooms has built-in-robies and the master bedroom features its own ensuite complete with shower and bath. Enjoy a permanent vacation lifestyle with the premium resort-like amenities offered to Loralea Gardens residents, including an indoor pool, sauna, fully equipped gym and beautifully manicured gardens. A level short walk away from St Ives Shopping Village and cafes, within St Ives North Public and St Ives High School zone and also within close proximity to excellent private schools such as Masada, Brigidine and Ravenswood Colleges.

### Property Highlights:

- Two large bedrooms with built-in-robies, master including ensuite
- Generously sized combined living/dining room
- Modern kitchen and internal laundry room

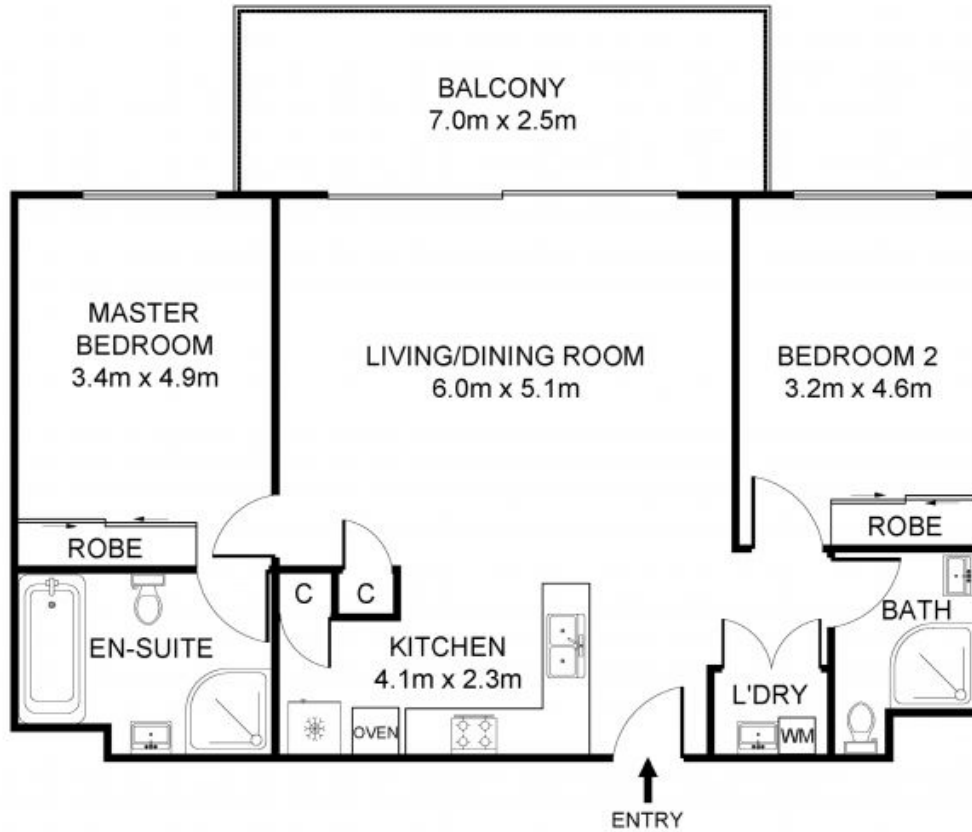
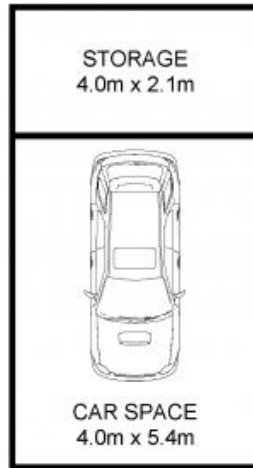


**Sima Akbarian**

0418 855 577

# ASSET

realty



639D/17-19 MEMORIAL AVENUE, ST IVES

INTERNAL AREA+BALCONY: 105 SQM  
CAR PARKING+STORAGE CAGE: 30 SQM  
TOTAL AREA: 135 SQM

DISCLAIMER: 3D Property View accepts no liability for the accuracy of details contained within our floor plans. All plans are drawn and also checked to the best of our ability, however information contained in our floor plans such as area calculations are approximate, and have not been surveyed or drawn to scale. Our floor plans are for representational purposes only and should not be used as a substitute for professional advice. Do not rely on our floor plans for structural or detailed information.

639D/17-19 Memorial Avenue, St Ives, NSW

# ASSET

realty