



21/131-135 Mona Vale Road St Ives, NSW

 2  2  2

Spacious 2 Bedrooms + Family/TV Room Apartment with Beautiful Bush Vistas - Total Area 193sqm (Approx.) - Move In or Invest

This generously sized, bright and airy apartment is situated within a modern and exclusive Over 55's apartment complex, conveniently located in the heart of St Ives backing out onto Dalrymple-Hay Natural Reserve, exuding a beautifully natural and serene atmosphere throughout. Enjoy beautiful uninterrupted bush vistas right on your large and private balcony, perfect for both relaxing and entertaining.

The floorplan of this apartment offers 2 spacious bedrooms with large built-in robes, the master bedroom features a study nook and an ensuite with double vanity, combined lounge/dining room seamlessly flowing out to the balcony, a modern designer kitchen featuring top-of-the-line appliances and an internal laundry room. Boasting refined finishes throughout, this apartment was designed and curated to provide the epitome of comfortable and luxurious lifestyle for its occupier.

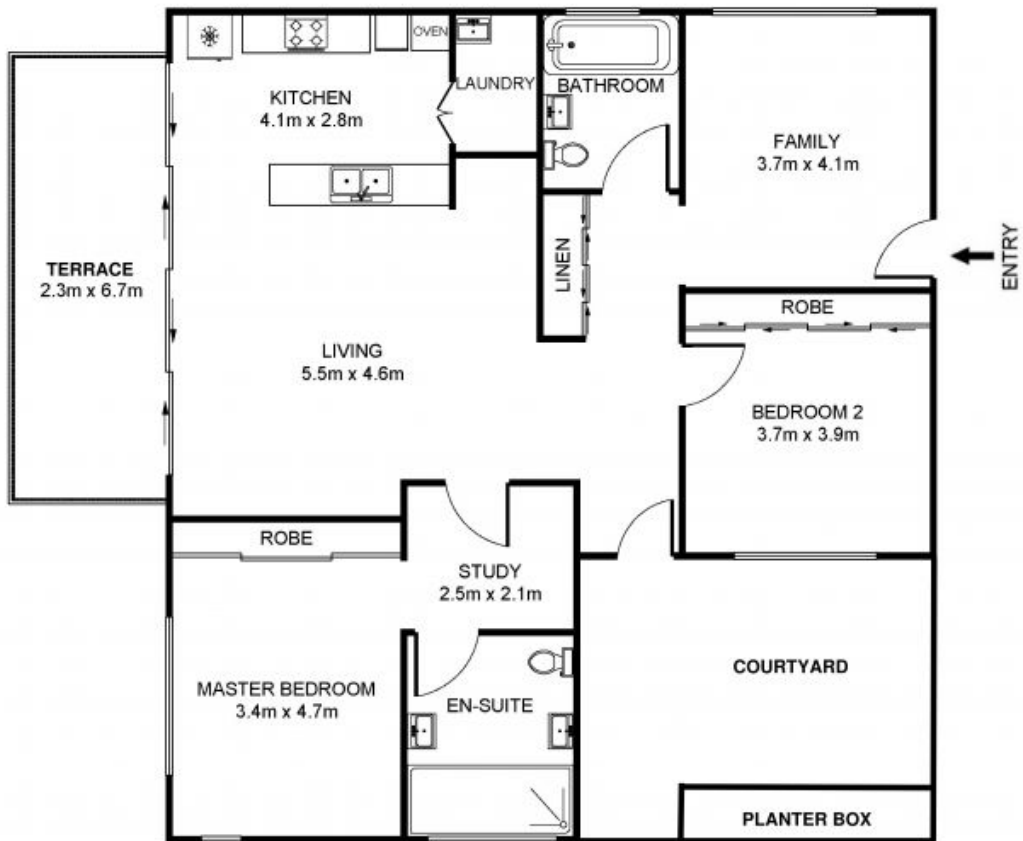
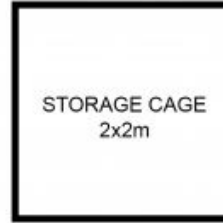
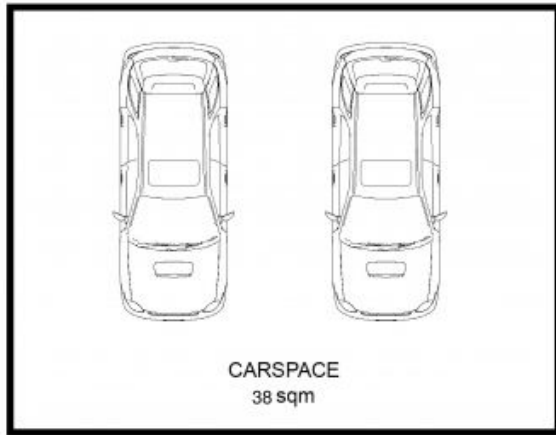
Property Highlights:

- 2 large bedrooms, both with built-in wardrobe and master features an en-suite and study nook
- Bright and airy open



Sima Akbarian

0418 855 577



ASSET
realty



21/131-135 MONA VALE ROAD, ST IVES

Internal (Incl. Terrace) : 155 sqm
Total : 193 sqm

21/131-135 Mona Vale Road St Ives, NSW

DISCLAIMER: 3D Property View accepts no liability for the accuracy of details contained within our floor plans. All plans are drawn and also checked to the best of our ability, however information contained in our floor plans such as area calculations are approximate, and have not been surveyed or drawn to scale. Our floor plans are for representational purposes only and should be used as such for general information only. Do not rely on our floor plans for structural or detailed information.

ASSET
realty