



525C/17-19 Memorial Avenue St Ives, NSW



2



2



1

Chic and Contemporary 2 Bedroom + Study Apartment in the heart of St Ives

This modern and sleek, north-facing 2-bedroom plus study apartment is set within the highly-coveted and exclusive "Loralea Gardens", conveniently located in the heart of St Ives. This pet-friendly apartment boasts a warm and light-filled atmosphere throughout featuring an open plan living/dining room which flows out onto a large balcony with a leafy outlook perfect for entertaining, a modern and gourmet kitchen, 2 bedrooms with built-in-robies and master bedroom featuring its own ensuite complete with shower and bath, a study area and an internal laundry. Enjoy a permanent vacation lifestyle with the premium resort-like amenities offered to Loralea Gardens residents, including an indoor pool, sauna, fully equipped gym and beautifully manicured gardens. A level short walk away from St Ives Shopping Village and cafes, within St Ives North Public and St Ives High School zone and also within close proximity to excellent private schools such as Masada, Brigidine and Ravenswood Colleges.

Property Highlights:

- Two large bedrooms with built-in-robies, master including ensuite
- Additional linen cupboard and ample storage
- Dedicated study area - perfect for working from home

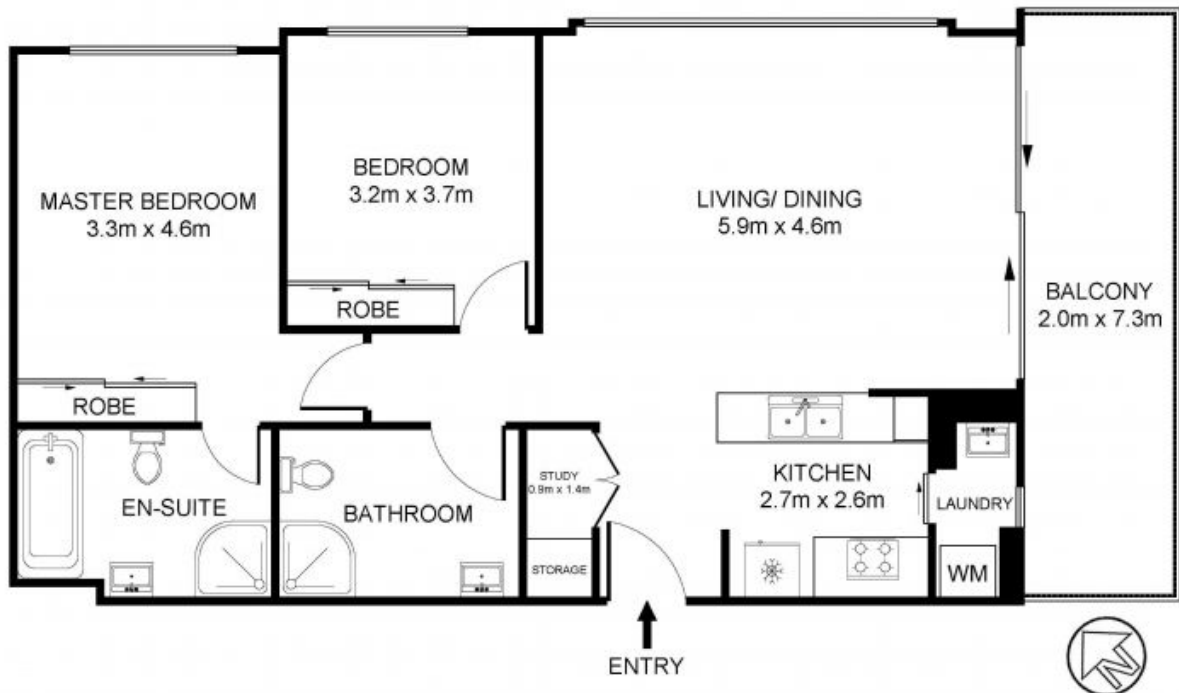
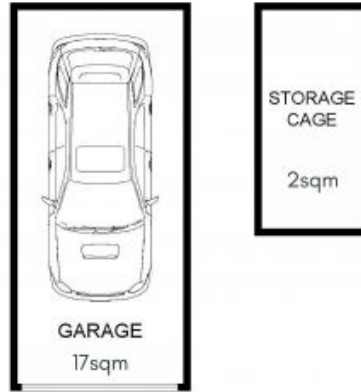


Sima Akbarian

0418 855 577

ASSET

realty



Internal (Incl. Balcony) : 99sqm (Approx.)
 Garage : 17sqm (Approx.)
 Storage : 2sqm (Approx.)
 Total : 118sqm (Approx.)

525/17-19 MEMORIAL AVENUE, ST IVES

DISCLAIMER: 3D Property View accepts no liability for the accuracy of details contained within our floor plans. All plans are drawn and also checked to the best of our ability, however information contained in our floor plans such as area calculations are approximate, and have not been surveyed or drawn to scale. Our floor plans are for representational purposes only and should not be used as a substitute for professional advice. For more information, please contact your agent or visit our website.

525C/17-19 Memorial Avenue St Ives, NSW

ASSET
realty