



1/42 Glendon Road Double Bay, NSW



4



3



2

Brand New House alternative set in the Beautiful Double Bay

VIEW VIRTUAL TOUR:

<https://vtc.virtualtourscreator.com.au/share/20d51edc771c90d5fc4279f1059c3f39>

Or to inspect by appointment - contact Hilary 0414 442 414 or Caroline 0422 743 374

In the heart of Double Bay, bathed in light, leafy views and quality finishes sits this stunningly stylish 4-bedroom townhouse, offering it all. This brand-new property with its tastefully designed layout has basement garage for two cars, three bathrooms and a private rear patio sitting on a quiet cul de sac with street frontage.

Ideal for executive couple or small family, this stunning property is an alternative to an apartment in Bondi, or terrace in Paddington/Potts Point. Enjoy the perks of a typical residential home with leafy outlook with no strata levies!

We say this stunner is "not too big, not too small, it's just right!"



Hilary Lazarus

0414 442 414



Caroline Van

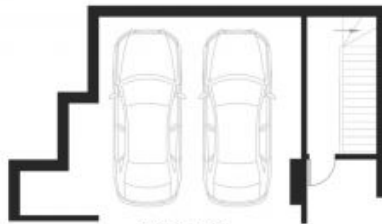
0422743374



SITE PLAN



FIRST FLOOR



SECURE DOUBLE
CAR SPACE
5.3m x 5.3m
BASEMENT



GROUND FLOOR