



20/131-135 Mona Vale Road St Ives NSW

2  2  2 

This generously sized, bright and airy apartment is situated within a modern and exclusive Over 55's apartment complex, conveniently located in the heart of St Ives backing out onto Dalrymple-Hay Natural Reserve, exuding a beautifully natural and serene atmosphere throughout. Enjoy beautiful uninterrupted bush vistas right on your large and private balcony, perfect for both relaxing and entertaining.

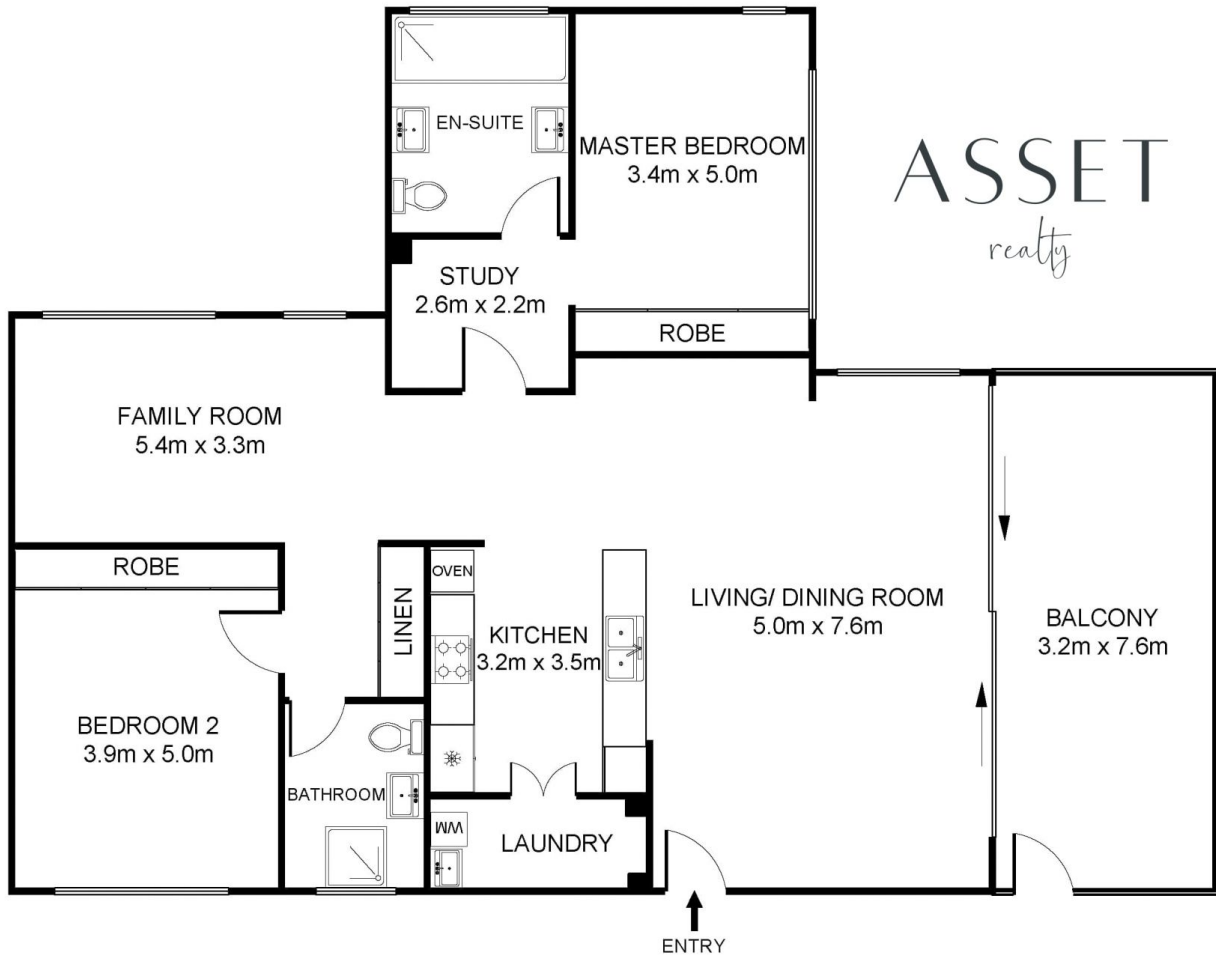
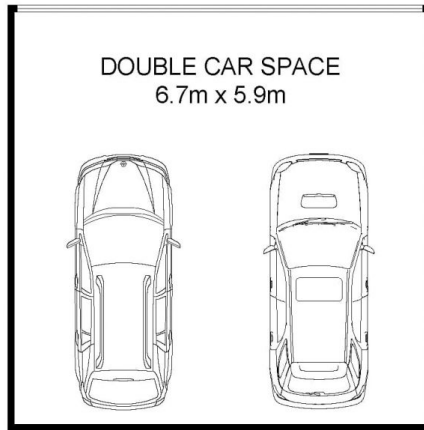
Price : \$ 1,250,000

View : <https://www.assetrealty.com.au/sale/nsw/north-s-hore-upper/st-ives/residential/apartment/6488788>

The floorplan of this apartment offers 2 spacious bedrooms with large built-in robes, the master bedroom features a study nook and an ensuite with double vanity, combined lounge/dining room seamlessly flowing out to the balcony, a modern designer kitchen featuring top-of-the-line appliances and an internal laundry room. Boasting refined finishes throughout, this apartment was designed and curated to provide the epitome of comfortable and luxurious



Sima Akbarian
02 9498 7799



20/131-135 MONA VALE ROAD, ST IVES

RESIDENCE AREA :159 SQM
TOTAL AREA :204 SQM

DISCLAIMER: 3D Property View accepts no liability for the accuracy of details contained within our floor plans. All plans are drawn and also checked to the best of our ability, however information contained in our floor plans such as area calculations are approximate, and have not been surveyed or drawn to scale. Our floor plans are for representational purposes only and should be used as such. Do not attempt to refer to our floor plans for structural or detailed information.