



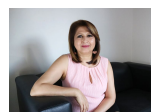
1/16-22 Dumaresq Street Gordon, NSW

 1
  1
  1

Spacious One Bedroom Garden apartment set in the heart of Gordon - Walk to Gordo

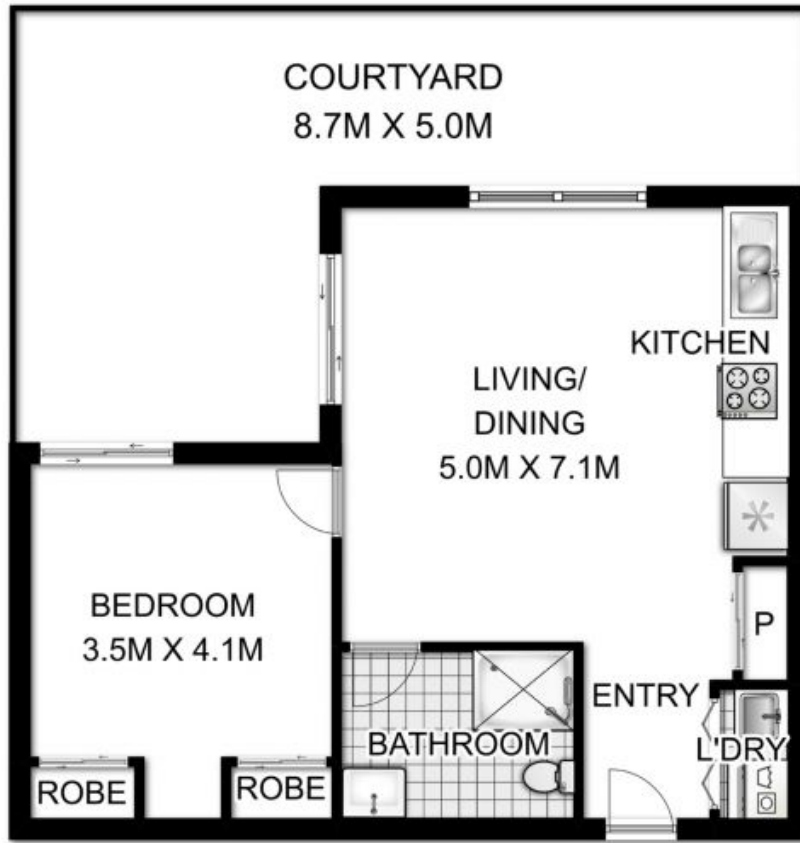
This North East facing modern apartment offering a sought-after lifestyle of convenience and comfort, is a contemporary complex that optimises space and privacy, this secure apartment boasts quality finishes and a stylish fresh design throughout. Situated in a premier location. Highly convenient, short walk to Gordon Shopping centre and train station.

- * Combined living & dining area, sliding doors open to courtyard.
- * Open plan Kitchen is equipped with gas cooking, stone benchtops and European appliances.
- * Bathroom includes a vanity with a Caesar stone bench top
- * Spacious bedroom include built-in wardrobes
- * Ducted air conditioning throughout and video intercom
- * Internal laundry includes a sink and a wall mounted dryer
- * Security car space + storage cage with lift access
- * Walk to Gordon Train Station and Shopping centre, Killara High School zone and Gordon West Public School, close to Ravenswood



Sima Akbarian

0418 855 577



INTERNAL AREA + COURTYARD: 79 SQM APPROX.
 CAR SPACE + STORAGE CAGE : 27 SQM APPROX.
 TOTAL AREA : 106 SQM APPROX.



1/16-22 Dumaresq Street, Gordon

DISCLAIMER: 3D Property View accepts no liability for the accuracy of details contained within our floor plans. All floor plans are drawn and also checked to the best of our ability, however information contained in our floor plans such as area, dimensions, and fixtures are approximate, and have not been surveyed or drawn to scale. Our floor plans are for representational purposes only and should not be used as such. Do not attempt to refer to any floor plans for site specific detailed information.

1/16-22 Dumaresq Street

Gordon, NSW

